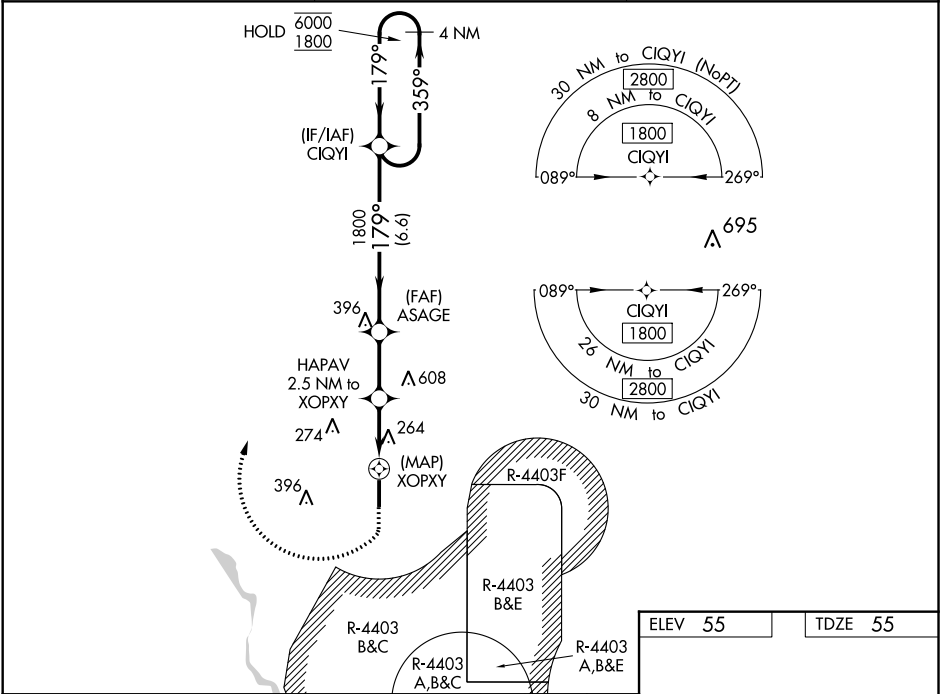


WAAS CH 42938 W18A	APP CRS 179°	Rwy Idg 5000 TDZE 55 Apt Elev 55
--	------------------------	---

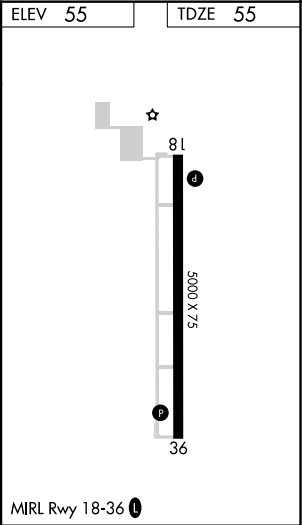
RNAV (GPS) Y RWY 18
PICAYUNE MUNI (MJD)

RNP APCH. Baro-VNAV and VDP NA when using Stennis Intl altimeter setting. Rwy 18 helicopter visibility reduction below 3/4 SM NA. For uncompensated Baro-VNAV systems, LNAV/VNAV NA below -15°C or above 5°C. When local altimeter setting not received, use Stennis Intl altimeter setting: increase LPV DA to 377 and visibility all Cats 1/8 mile; increase LNAV/VNAV DA to 621 and visibility all Cats 1/8 mile; increase all MDA 40 feet. Procedure NA when R-4403 B/C/E is active.	MISSED APPROACH: (Do not exceed 185K) Climb to 560 then climbing right turn to 1800 direct CIQYI and hold.
---	--

AWOS-3PT 119.075	GULFPORT APP CON 124.6 354.1	UNICOM 122.8 (CTAF) 0
----------------------------	--	---------------------------------



4 NM Holding Pattern		CIQYI	ASAGE	HAPAV	560	1800	CIQYI
6000 ← 359°		1800 → 179°	179°	2.5 NM to XOPXY	↑	↑	✱
GP 3.00°		1800	1800	*1.3 NM to XOPXY	*LNAV only.		
TCH 36		6.6 NM	2.4 NM	1.2 NM	1.3 NM	0.5 NM	
CATEGORY	A	B	C	D			
LPV DA	343-1		288 (300-1)				
LNAV/VNAV DA	587-1 7/8		532 (600-1 7/8)				
LNAV MDA	520-1	465 (500-1)	520-1 3/8	465 (500-1 3/8)			
CIRCLING	520-1 465 (500-1)	580-1 525 (600-1)	NA				



SC-4, 03 DEC 2020 to 31 DEC 2020

SC-4, 03 DEC 2020 to 31 DEC 2020