

WAAS CH 42909 W36A	APP CRS 359°	Rwy Idg TDZE 54 Apt Elev 55
--	------------------------	---

RNAV (GPS) RWY 36

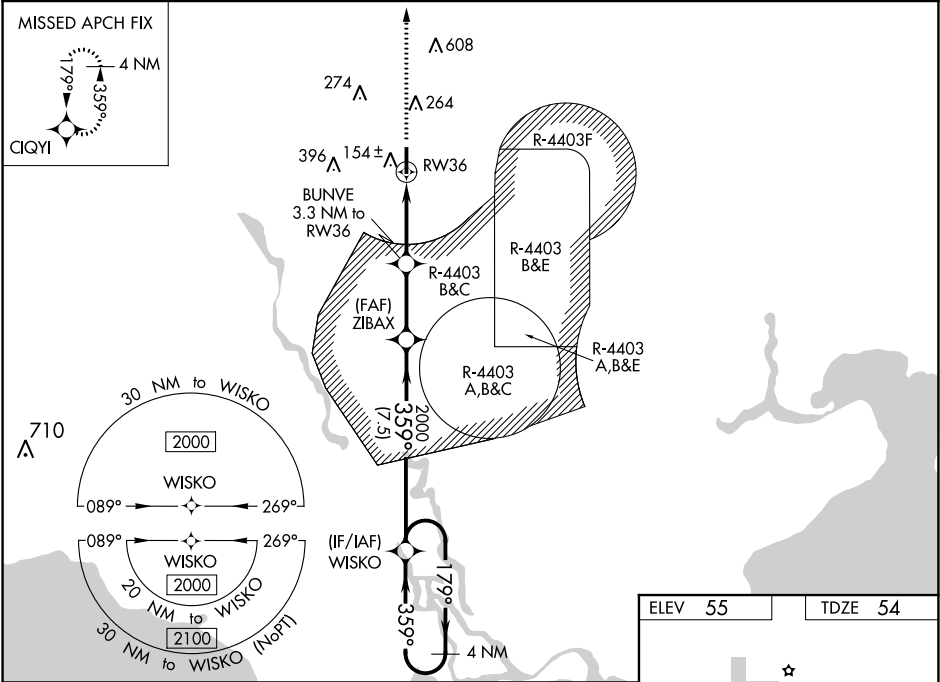
PICAYUNE MUNI (MJD)

⚠

For uncompensated Baro-VNAV systems, LNAV/VNAV NA below -1.5°C (5°F) or above 54°C (130°F). Baro-VNAV and VDP NA when using Stennis Intl altimeter setting. DME/DME RNP-0.3 NA. Helicopter visibility reduction below ¾ SM NA. Procedure NA when R-4403 A, B, C, or E is active. When local altimeter setting not received, use Stennis Intl altimeter setting: increase LPV DA to 338 and all Cats visibility ½ mile; increase LNAV/VNAV DA to 374 and all Cats visibility ½ mile; increase all MDA 40 feet and LNAV Cats C and D visibility ½ mile, and Circling Cat C visibility ½ mile.

MISSED APPROACH:
Climb to 1800 direct CIQYI and hold.

AWOS-3PT 119.075	GULFPORT APP CON 124.6 354.1	UNICOM 122.8 (CTAF)
----------------------------	--	-------------------------------



1800	CIQYI				
*LNAV only.					
BUNVE 3.3 NM to RW36		ZIBAX 2000	WISKO 2000	GP 3.00° TCH 43	
RW36		359°	179°	2000	
1 NM		2.3 NM	2.7 NM	7.5 NM	
CATEGORY	A	B	C	D	
LPV DA	304-7/8		250 (300-7/8)		
LNAV/VNAV DA	340-1		286 (300-1)		
LNAV MDA	420-1		366 (400-1)		
CIRCLING	480-1 425 (500-1)	580-1 525 (600-1)	700-1¾ 645 (700-1¾)	960-3 905 (1000-3)	

