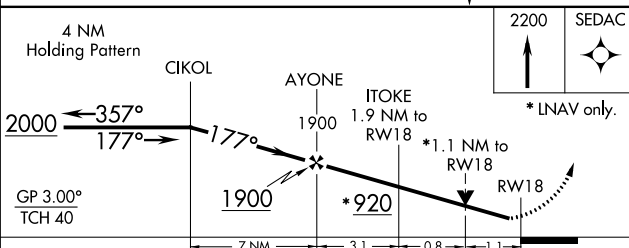
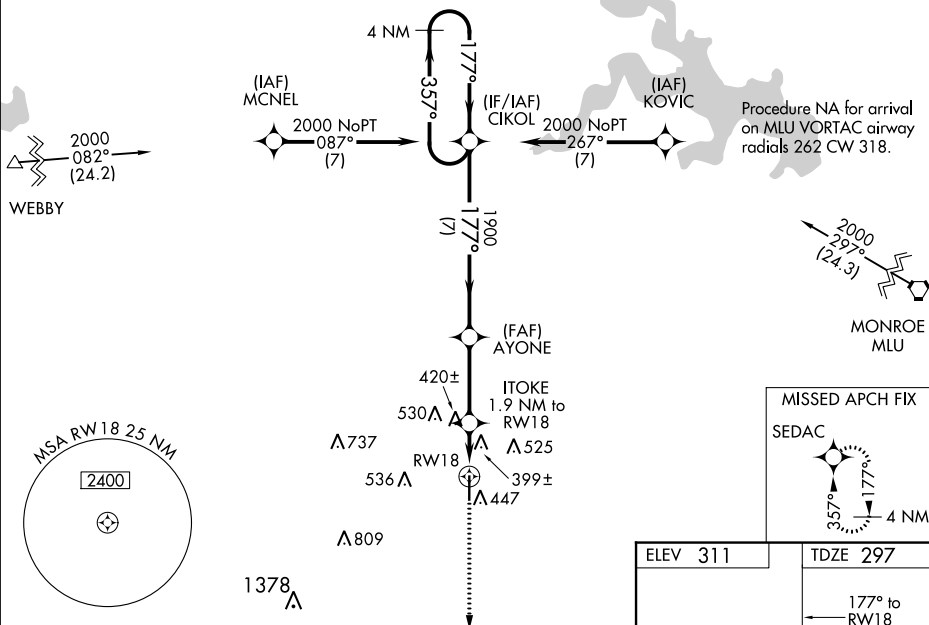



18144

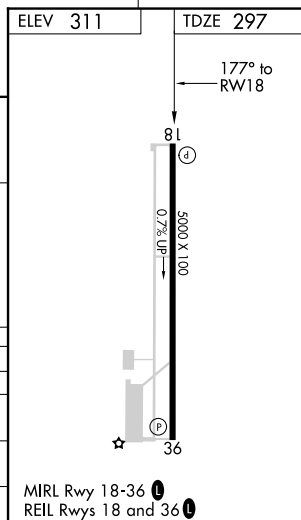
RNAV (GPS) RWY 18
RUSTON RGNL (RSN)

Baro-VNAV NA when using **Monroe** altimeter setting. For uncompensated Baro-VNAV systems, **LNAV/VNAV** NA below -15°C (5°F) or above 42°C (107°F). Rwy 18 helicopter visibility reduction below ¾ SM NA. **VDP** NA with **Monroe** altimeter setting. When local altimeter setting not received, use **Monroe** altimeter setting and increase all DA 97 feet and all MDA 100 feet; increase LPV all Cats. **LNAV/VNAV** all Cats and **LNNAV** Cat C and D visibility ¼ mile.

MISSED APPROACH:
Climb to 2200 direct
SEDAC and hold.

UNICOM
122.7 (CTAF) 

CATEGORY	A	B	C	D
LPV DA	547-7/8		250 (300-7/8)	
LNNAV/ VNAV DA	723-1 1/2		426 (500-1 1/2)	
LNNAV MDA	680-1	383 (400-1)	680-1 1/8	383 (400-1 1/8)
CIRCLING	760-1 449 (500-1)	780-1 469 (500-1)	780-1 1/2 469 (500-1 1/2)	880-2 569 (600-2)



RUSTON RGNL (RSN)
RNAV (GPS) RWY 18

SC-4, 03 DEC 2020 to 31 DEC 2020