

APP CRS
173°

Rwy Idg **4405**
TDZE **6**
Apt Elev **7**

RNAV (GPS) RWY 17

PORT OF SOUTH LOUISIANA EXECUTIVE RGNL (APS)

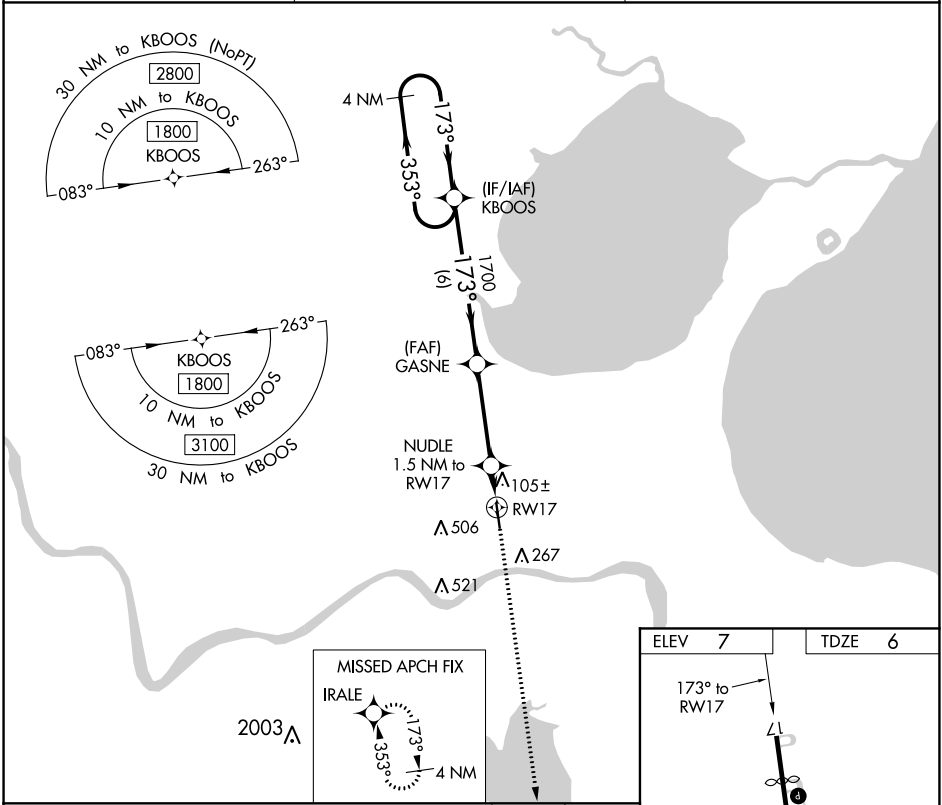
T

A

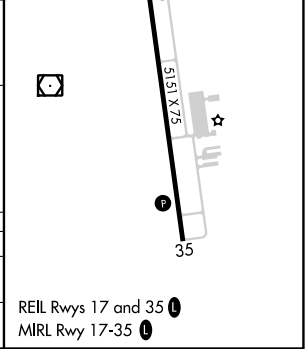
Rwy 17 helicopter visibility reduction below ¾ SM NA. DME/DME RNP-0.3 NA.
When local altimeter setting not received, use Louis Armstrong New Orleans Intl altimeter setting and increase all MDA 60 feet, increase LNAV Cat C visibility ¼ SM.
VDP NA when using Louis Armstrong New Orleans Intl altimeter setting.

MISSED APPROACH: Climb to 2000 direct IRALE and hold.

AWOS-3PT 125.45	NEW ORLEANS APP CON 125.5 350.35	UNICOM 122.7 (CTAF) 0
---------------------------	--	---------------------------------



4 NM Holding Pattern				
1800 ← 353° → 173° → 1700 → 3.00° TCH 50 → 520 → 1.1 NM to RW17 → RW17				
6 NM 3.7 NM 0.4 NM 1.1 NM				
CATEGORY	A	B	C	D
LNAV MDA	400-1	394 (400-1)	400-1 1/8 394 (400-1 1/8)	NA
CIRCLING	700-1	693 (700-1)	820-2 1/2 813 (900-2 1/2)	NA



SC-4, 03 DEC 2020 to 31 DEC 2020

SC-4, 03 DEC 2020 to 31 DEC 2020