
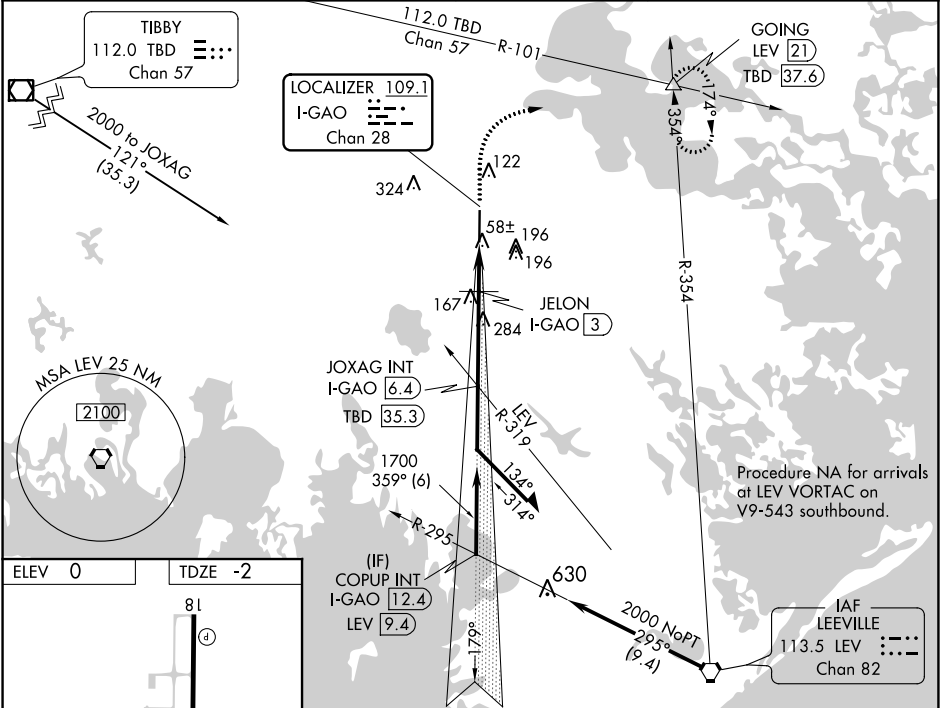


LOC/DME I-GAO	APP CRS	Rwy ldg	6500
109.1	359°	TDZE	-2
Chan 28		Apt Elev	0

ILS or LOC RWY 36
SOUTH LAFOURCHE LEONARD MILLER JR (GAO)

DME required.		<div>SSALR</div> <div></div>	MISSED APPROACH: Climb to 1200, then climbing right turn to 2000 on heading 050° and TBD VOR/DME R-101 to GOING INT/LEV 21 DME and hold.	
<div>T</div>				
AWOS-3PT	NEW ORLEANS APP CON	CLNC DEL	UNICOM	
118.175	120.85 256.9	120.85	123.0 (CTAF) <div>0</div>	



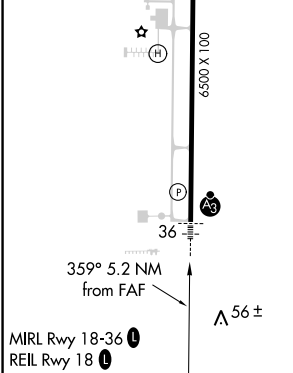


Diagram illustrating the approach path for the 36th runway. The path is shown with a 359° heading and a 5.2 NM distance from the FAF. The diagram also shows the MRL Rwy 18-36 and REIL Rwy 18.

1200 ↑		2000 hdg 050°		TBD R-101	GOING △	JOXAG INT I-GAO [6.4]	Remain within 10 NM	
*LOC only.		*I-GAO [2.1]		JELON I-GAO [3]	1700	179°	2000	
I-GAO [1.2]					620*	359°	1700	
0.9 NM		0.9 NM		3.4 NM		GS 3.00° TCH 51		
CATEGORY		A		B		C		D
S-ILS 36				198-1½		200 (200-½)		
S-LOC 36				320-½		322 (400-½)		
CIRCLING		440-1 440 (500-1)		560-1 560 (600-1)		640-1¾ 640 (700-1¾)		640-2 640 (700-2)