

WAAS CH 78115 W18A	APP CRS 185°	Rwy Idg TDZE Apt Elev	5001 454 458
--	------------------------	-----------------------------	---

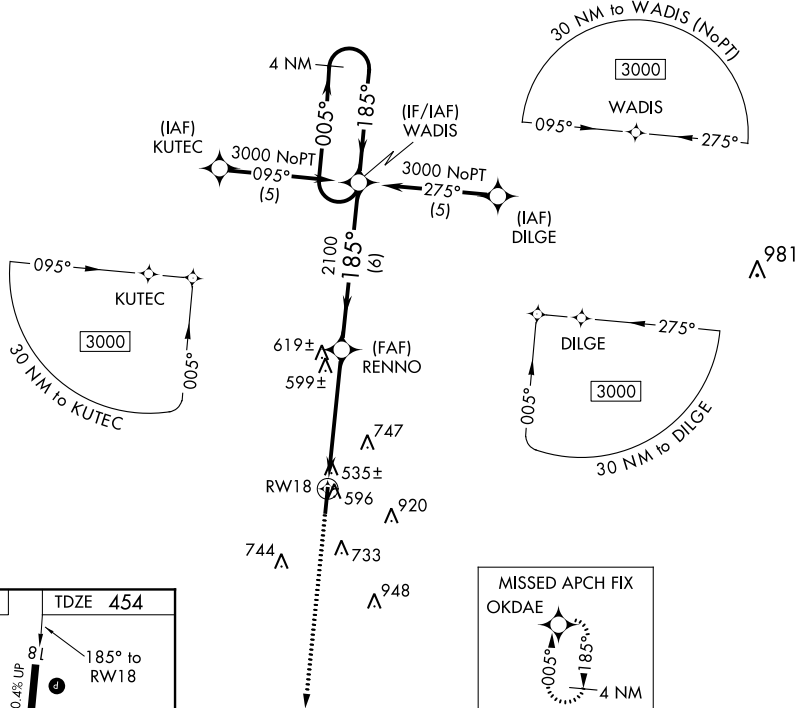
RNAV (GPS) RWY 18
PHILADELPHIA MUNI (MPE)

▼ For uncompensated Baro-VNAV systems, LNAV/VNAV NA below -15°C (5°F) or above 48°C (118°F). DME/DME RNP-0.3 NA. Visibility reduction by helicopters NA.

▲ When localizer setting not received, use Key Field altimeter setting and increase all DA 101 feet and all MDA 120 feet and increase LPV all Cats, LNAV Cat C and Circling Cats C and D visibility ¼ mile, increase LNAV/VNAV all Cats, LNAV Cat D visibility ½ mile. Baro-VNAV and VDP NA when using Key Field altimeter setting.

MISSED APPROACH:
Climb to 3000 direct
OKDAE and hold.

AWOS-3P 118.725	MEMPHIS CENTER 132.75 350.25	UNICOM 123.0 (CTAF) 0
---------------------------	--	---------------------------------



ELEV 458

TDZE 454

8L

185° to RW18

0.4% UP

5001 X 75

36

MRL Rwy 18-36

3000 OKDAE

4 NM Holding Pattern

RENNO

WADIS

3000

185°

005°

185°

2100

GP 3.00° TCH 47

1.5 3.5 NM 6 NM

A B C D

CATEGORY	A	B	C	D
LPV DA		774-1¼	320 (400-1¼)	
LNAV/VNAV DA		850-1½	396 (400-1½)	
LNAV MDA	960-1 506 (600-1)		960-1½ 506 (600-1½)	
CIRCLING	1060-1 602 (700-1)		1060-1¾ 602 (700-1¾)	1060-2 602 (700-2)