

WAAS CH <b>61024</b> <b>W36A</b>	APP CRS <b>358°</b>	Rwy Idg <b>4202</b> TDZE <b>218</b> Apt Elev <b>218</b>
--	------------------------	---

RNAV (GPS) RWY 36  
SPRINGHILL (SPH)

RNP APCH.



ANA

Rwy 36 helicopter visibility reduction below  $\frac{3}{4}$  SM NA.  
For uncompensated Baro-VNAV systems, procedure NA below -15°C or above 54°C.

**MISSED APPROACH:**  
Climb to 3000 direct  
ZESTU and hold.

SHREVEPORT APP CON  
123.75 360,725

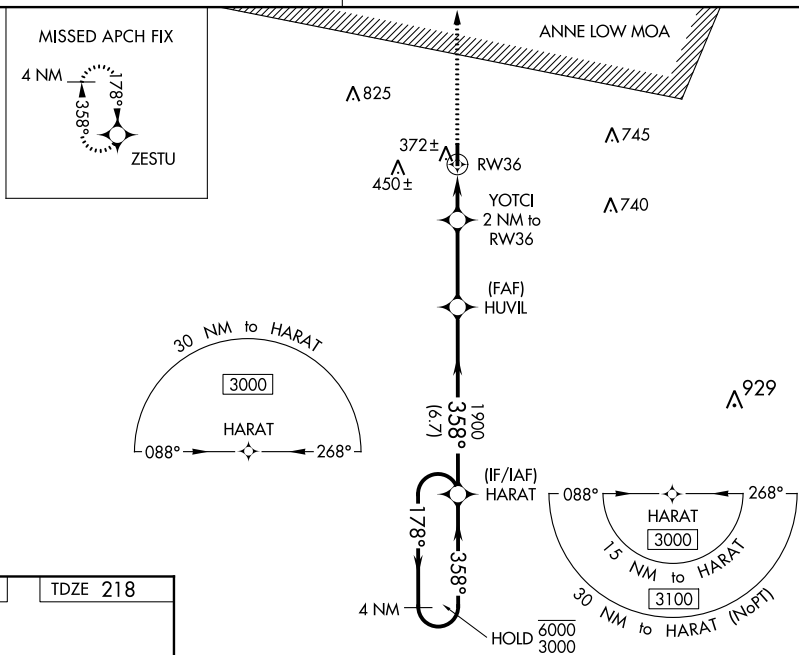
UNICOM  
122.8 (CTAF) **L**

Diagram illustrating a 4 NM Holding Pattern. The pattern is defined by the following parameters:

- Frequency:** 1900
- Altitude:** 3000
- Turns:** 180°, 178°, 358°, 358°
- Distances:** 2 NM, 3.1 NM, 6.7 NM
- GP 3.00° TCH 54**