

VORTAC AEX <b>116.1</b> Chan <b>108</b>	APP CRS <b>110°</b>	Rwy Idg TDZE Apt Elev <b>N/A</b> <b>N/A</b> <b>79</b>
---	------------------------	--

VOR/DME-A

MARKSVILLE MUNI (MKV)

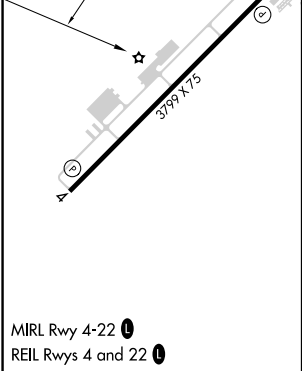
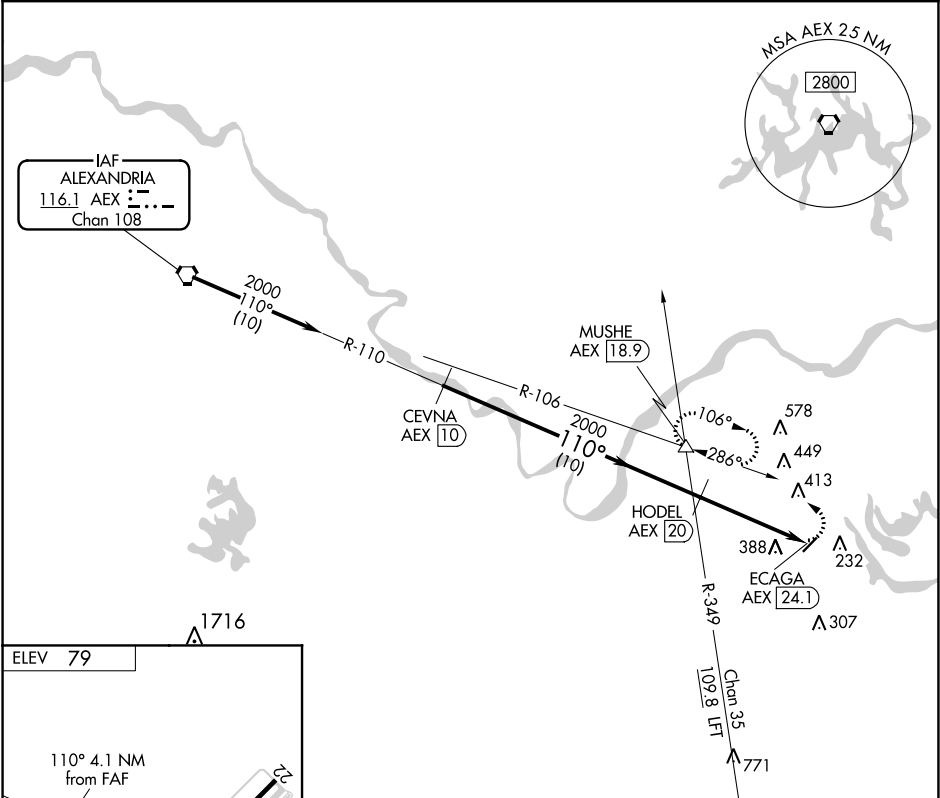
▼

▲ NA

Use Esler Rgnl altimeter setting. When not received, use Alexandria Intl altimeter setting. When neither is received, procedure NA.

MISSED APPROACH: Climbing left turn to 4000 via AEX R-106 to MUSHE INT/AEX 18.9 DME and hold.

POLK APP CON <b>125.4 302.2</b>	CTAF <b>122.9 0</b>
------------------------------------	------------------------



Procedure Turn NA	CEVNA AEX 10	HODEL AEX 20	ECAGA AEX 24.1	MUSHE AEX 18.9
2000	110°	2000	110°	4000
10 NM		4.1 NM		
CATEGORY	A	B	C	D
CIRCLING	760-1 681 (700-1)	760-1¼ 681 (700-1¼)	NA	