

WAAS CH 49201 W18A	APP CRS 181°	Rwy Idg 6502 TDZE 298 Apt Elev 298
--	------------------------	---

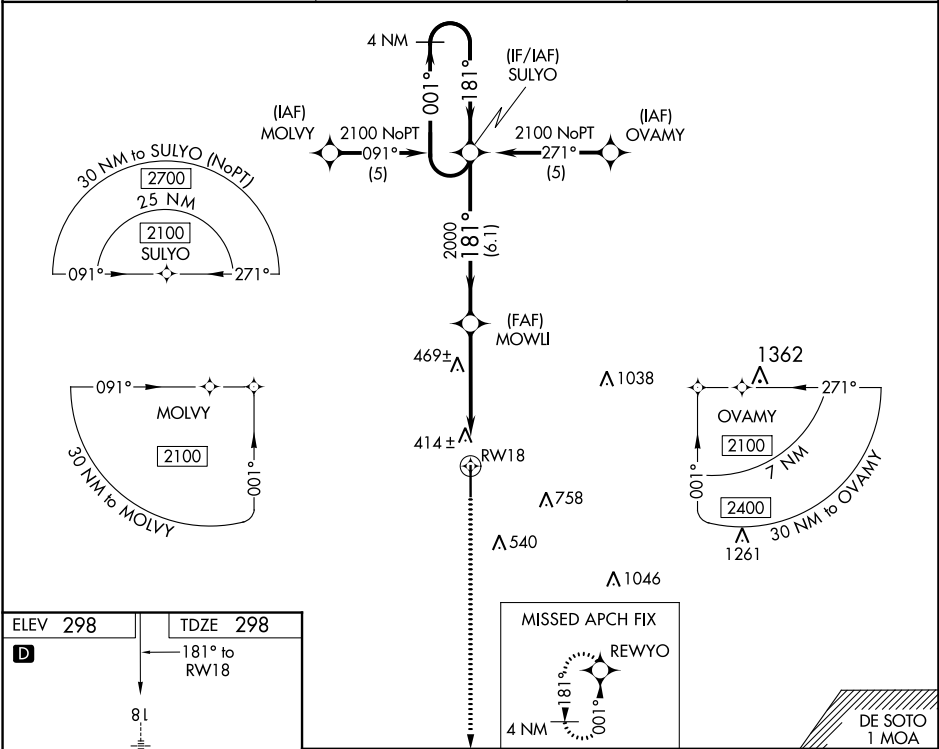
RNAV (GPS) RWY 18
HATTIESBURG-LAUREL RGNL (PIB)

⚠ For inoperative MALSR, increase LNAV Cat D visibility to 1 1/2 mile. Baro-VNAV NA when using Bobby L. Chain Muni altimeter setting. For uncompensated Baro-VNAV systems, LNAV/VNAV NA below -15°C (5°F) or above 48°C (118°F). DME/DME RNP-0.3 NA. When local altimeter setting not received, use Hattiesburg Bobby L. Chain Muni altimeter setting and increase all DA 51 feet and increase all MDA 60 feet, and increase LNAV/VNAV all Cts visibility 1/4 mile. VDP NA with Bobby L. Chain Muni altimeter setting.

MALSR

MISSED APPROACH:
Climb to 2000 direct
REWYO and hold.

AWOS-3PT 128.325	HOUSTON CENTER 126.8 327.8	UNICOM 123.0 (CTAF) 1
----------------------------	--------------------------------------	---------------------------------



ELEV **298** TDZE **298**

D

HIRL Rwy 18-36 1

REIL Rwy 18 and 36 1

4 NM Holding Pattern				
SULO				
2100 ← 001° 181° →				
GP 3.00° TCH 60				
MOWLI				
2000				
6.1 NM 4 NM 1.1 NM				
CATEGORY	A	B	C	D
LPV DA		498-1/2	200 (200-1/2)	
LNAV/VNAV DA		691-3/4	393 (400-3/4)	
LNAV MDA	720-1/2	422 (500-1/2)	720-3/4	720-1
			422 (500-3/4)	422 (500-1)
CIRCLING	740-1	760-1	760-1 1/2	860-2
	442 (500-1)	462 (500-1)	462 (500-1 1/2)	562 (600-2)

SC-4, 03 DEC 2020 to 31 DEC 2020

SC-4, 03 DEC 2020 to 31 DEC 2020