

APP CRS  
**192°**

Rwy Idg  
TDZE  
**269**

Apt Elev  
**278**

RNAV (GPS) RWY 19

MINDEN (MNE)

RNP APCH.

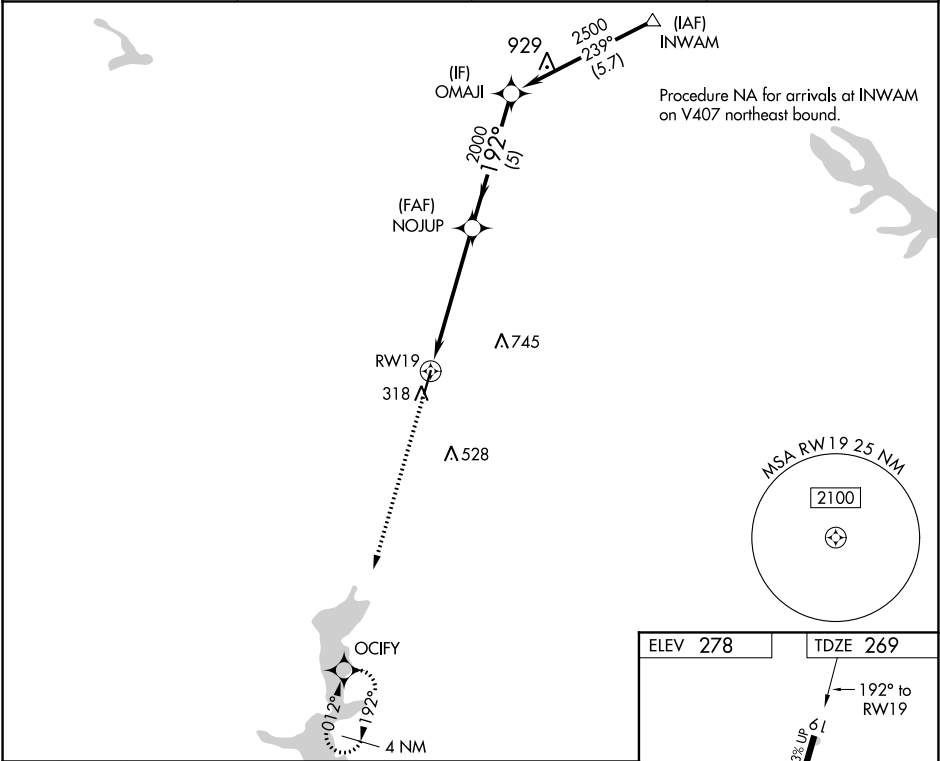
▼

▲

Rwy 19 helicopter visibility reduction below ¾ SM NA. Obtain local altimeter setting on CTAF; when not received, use Barksdale AFB altimeter setting and increase all MDA 80 feet: increase visibility LNAV Cats C and D and Circling Cat C to 1 ¾ SM.

MISSED APPROACH:  
Climb to 2500 direct OCIFY and hold.

AWOS-3PT <b>119.325</b>	SHREVEPORT APP CON <b>123.75 360.725</b>	GCO <b>135.075</b>	UNICOM <b>122.8 (CTAF) 0</b>
----------------------------	---	-----------------------	---------------------------------



2500

OCIFY

Visual Segment - Obstacles.

CATEGORY	A	B	C	D
LNAV MDA	820-1	551 (600-1)	820-1½	551 (600-1½)
CIRCLING	820-1	542 (600-1)	820-1½ 542 (600-1½)	840-2 562 (600-2)

ELEV 278

TDZE 269

MIRL Rwy 1-19 0

REIL Rwy 1 and 19