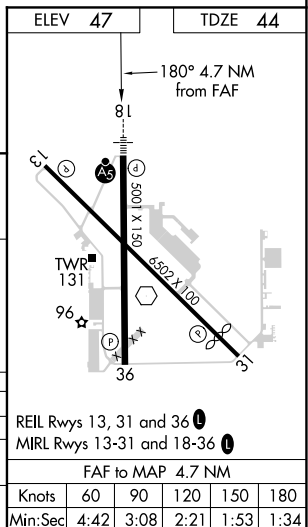
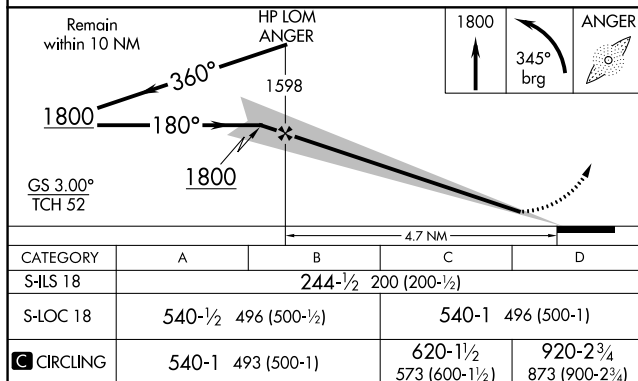
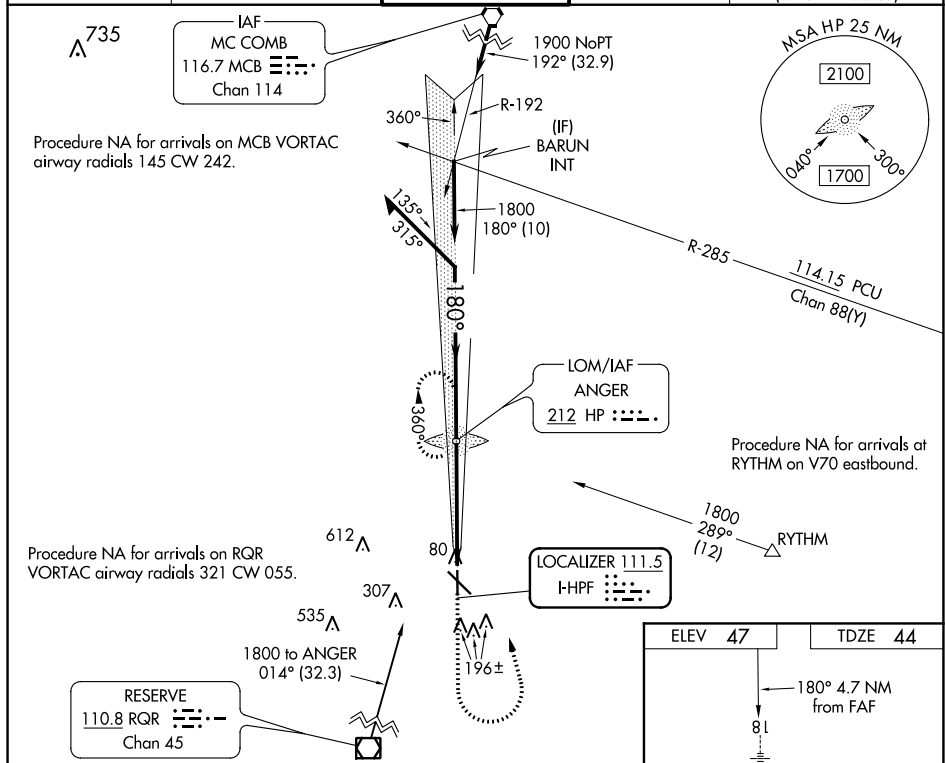


ILS or LOC RWY 18
HAMMOND NORTHSORE RGNL (HDC)

MISSED APPROACH: Climb to 1800 then left turn on 345° bearing to ANGER LOM and hold.

T
A NA For inop ALS, increase S-LOC 18 Cat C/D visibility to 1 $\frac{3}{8}$ SM.

ATIS 118.325	NEW ORLEANS APP CON 119.3 350.35	HAMMOND TOWER ★ 120.575 (CTAF) 0	GND CON 119.85	CLNC DEL 119.3 (When twr closed)
------------------------	--------------------------------------------	---------------------------------------------------	--------------------------	-----------------------------------------------



SC-4, 03 DEC 2020 to 31 DEC 2020