

WAAS CH 86510 W35A	APP CRS 342°	Rwy Idg 5003 TDZE 121 Apt Elev 121
----------------------------------------	------------------------	---------------------------------------------------------------

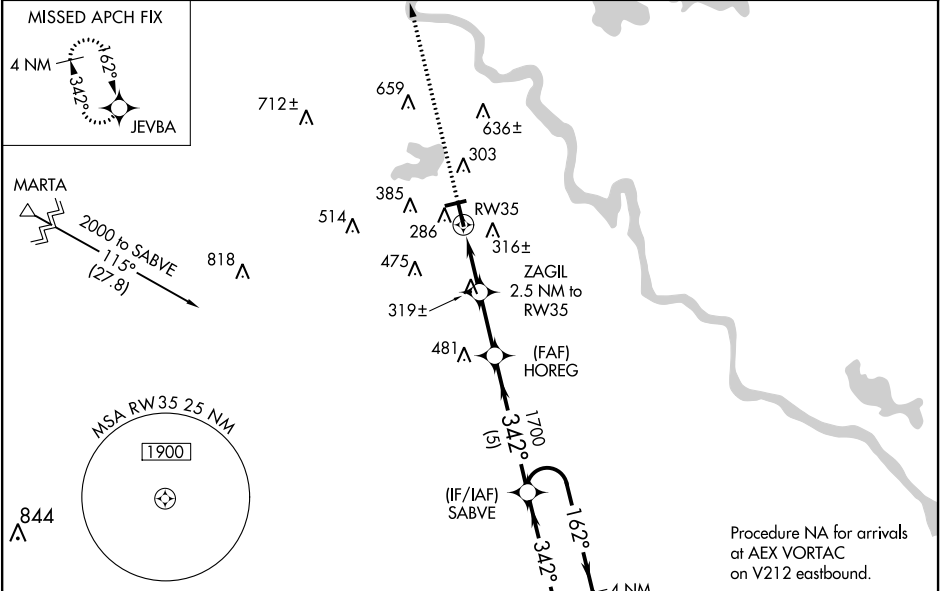
RNAV (GPS) RWY 35
NATCHITOCHES RGNL (IER)

⚠ Inoperative table does not apply to LPV all Cats, and LNAV Cats A and B. Baro-VNAV NA when using Alexandria Intl altimeter setting. For uncompensated Baro-VNAV systems, LNAV/VNAV NA below -15°C (5°F) or above 54°C (130°F). DME/DME RNP-0.3 NA. Helicopter visibility reduction below ¾ SM NA. When local altimeter setting not received, use Alexandria Intl altimeter setting and increase all DA 91 feet and all MDA 100 feet. Increase LNAV/VNAV all Cats, LNAV Cat C and Circling Cat C visibility ¼ mile. For inoperative ODALS, increase LNAV/VNAV all Cats visibility ½ mile.

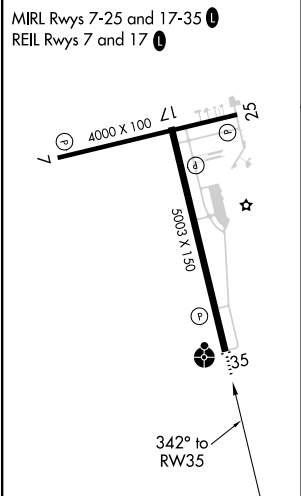
ODALS

MISSED APPROACH:
Climb to 2000 direct JEVBA and hold.

AWOS-3 119.025	POLK APP CON 125.4 302.2	GCO 135.075	UNICOM 122.8 (CTAF)
--------------------------	------------------------------------	-----------------------	-------------------------------



ELEV 121	TDZE 121
-----------------	-----------------



WARRIOR 1 MOA			
CLAIBORNE A & B MOA			
2000 JEVBA			
*LNAV only.			
ZAGIL 2.5 NM to RW35			
HOREG 1700			
SABVE 1700			
4 NM Holding Pattern			
2000			
GP 3.00° TCH 43			
CATEGORY	A	B	C
LPV DA	371-1	250 (300-1)	NA
LNAV/VNAV DA	486-1½	365 (400-1½)	NA
LNAV MDA	580-1	459 (500-1)	580-1½ 459 (500-1½)
CIRCLING	680-1 559 (600-1)	740-1 619 (700-1)	740-1¾ 619 (700-1¾)