

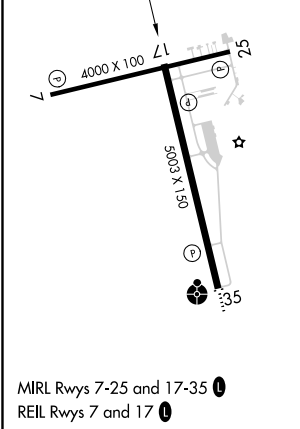
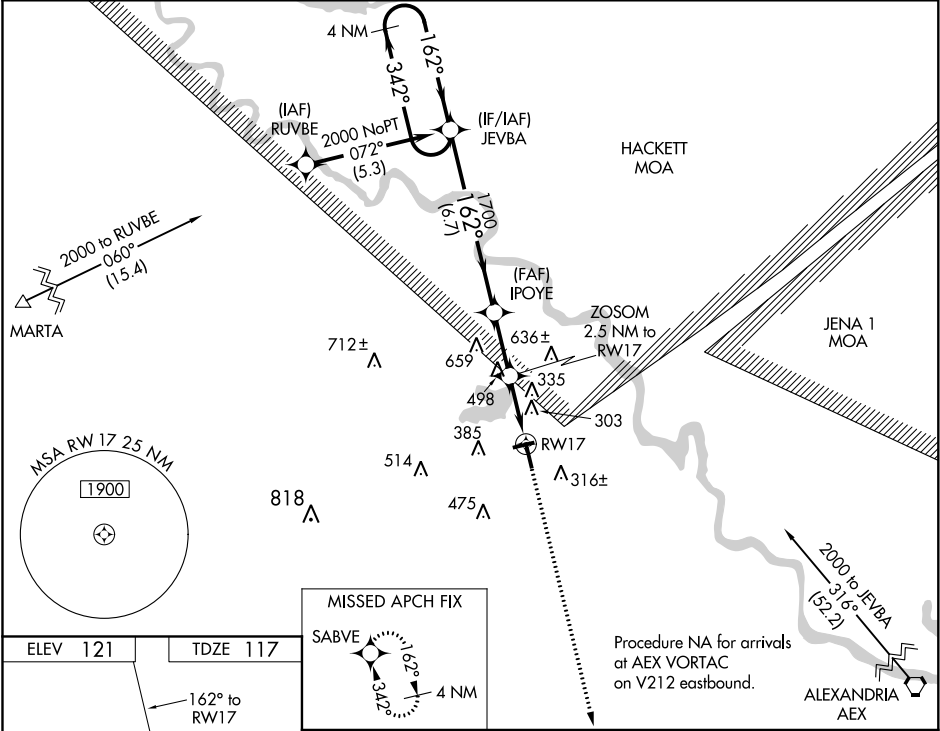
WAAS CH 77810 W17A	APP CRS 162°	Rwy ldg 5003 TDZE 117 Apt Elev 121
--	------------------------	---

RNAV (GPS) RWY 17
NATCHITOCHES RGNL (IER)

▼
▲
For uncompensated Baro-VNAV systems, LNAV/VNAV NA below -15°C (5°F) or above 54°C (130°F). DME/DME RNP-0.3 NA. Visibility reduction by helicopters NA. When local altimeter setting not received, use Alexandria Intl altimeter setting and increase all DA 91 feet and all MDA 100 feet. Increase LPV and LNAV/VNAV visibility ¾ mile all Cats, LNAV Cat C ¾ mile and Circling Cat C ¼ mile. Baro-VNAV and VDP NA when using Alexandria Intl altimeter setting.

MISSED APPROACH:
Climb to 2000 direct
SABVE and hold.

AWOS-3 119.025	POLK APP CON 125.4 302.2	GCO 135.075	UNICOM 122.8 (CTAF) 0
--------------------------	------------------------------------	-----------------------	---------------------------------



MISSED APCH FIX			
SABVE			
Procedure NA for arrivals at AEX VORTAC on V212 eastbound.			
ALEXANDRIA AEX			
VGSi and RNAV glidepath not coincident (VGSi Angle 3.00/TCH 45).			
4 NM Holding Pattern			
2000 ← 342° 162° → 1700			
GP 3.00° TCH 45			
JEVBA IPOYE ZOSOM 2.5 NM to RW17			
*1.4 NM to RW17			
*940			
6.7 NM 2.3 NM 1.1 1.4			
CATEGORY	A	B	C
LPV DA	367-¾	250 (300-¾)	NA
LNAV/VNAV DA	658-1 ⅞	541 (600-1 ⅞)	NA
LNAV MDA	620-1	503 (500-1)	620-1 ⅞ 503 (500-1 ⅞)
CIRCLING	680-1 559 (600-1)	740-1 619 (700-1)	740-1 ⅞ 619 (700-1 ⅞)

SC-4, 03 DEC 2020 to 31 DEC 2020

SC-4, 03 DEC 2020 to 31 DEC 2020