

LOC I-IER 110.5	APP CRS 342°	Rwy Idg TDZE 121 Apt Elev 121
---------------------------	------------------------	---

LOC RWY 35
NATCHITOCHES RGNL (I-ER)

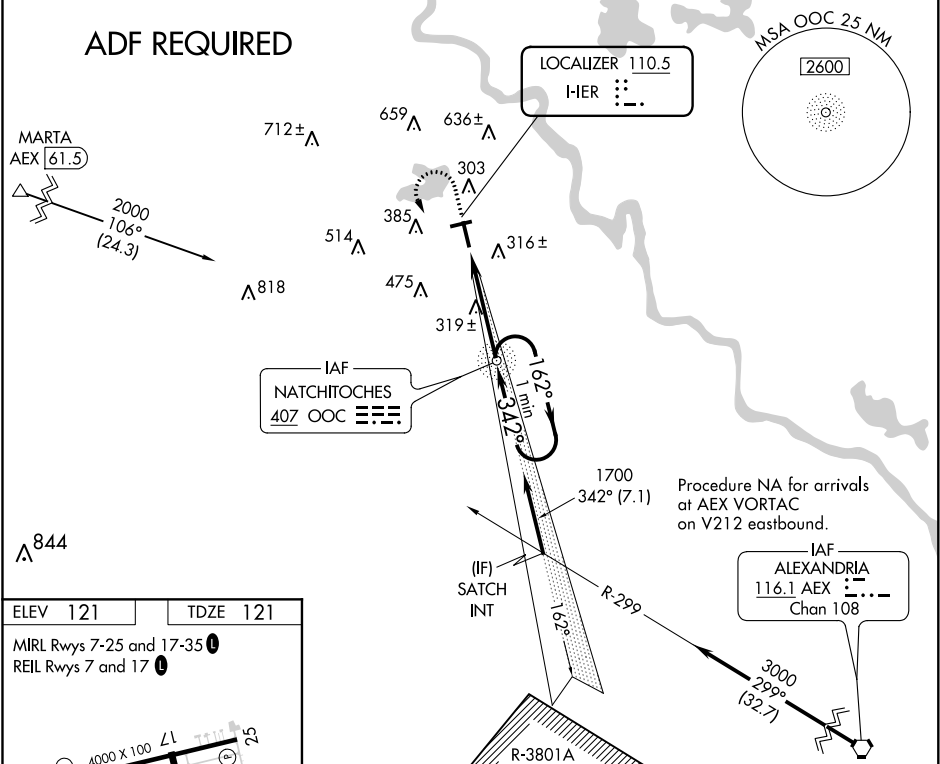
ADF REQUIRED

Helicopter visibility reduction below 3/4 SM NA. When local altimeter setting not received, use Alexandria Intl altimeter setting and increase all MDA 100 feet and all Cat C visibilities 1/4 mile. For inoperative ODALS when using Alexandria Intl altimeter setting, increase S-35 Cat C visibility 1/8 mile. Inoperative table does not apply to S-35 Cat A/B. ADF Required.

ODALS

MISSED APPROACH: Climb to 1000 then climbing left turn to 2000 direct OOC NDB and hold.

AWOS-3 119.025	POLK APP CON 125.4 302.2	GCO 135.075	UNICOM 122.8 (CTAF) 0
--------------------------	------------------------------------	-----------------------	---------------------------------



ELEV 121 TDZE 121

MIRL Rwy 7-25 and 17-35
REIL Rwy 7 and 17

FAF to MAP 4.2 NM

Knots	60	90	120	150	180
Min:Sec	4:12	2:48	2:06	1:41	1:24

1000 2000 OOC VGSI and descent angles not coincident (VGSI Angle 3.00/TCH 43).				
NDB One Minute Holding Pattern 162° 2000 342° 1700 3.43° TCH 43 4.2 NM				
CATEGORY	A	B	C	D
S-35	580-1	459 (500-1)	580-1 1/8 459 (500-1 1/8)	NA
CIRCLING	680-1 559 (600-1)	740-1 619 (700-1)	740-1 3/4 619 (700-1 3/4)	NA