

WAAS CH <b>61199</b> <b>W18A</b>	APP CRS <b>181°</b>	Rwy Idg TDZE <b>402</b> Apt Elev <b>402</b>
--	------------------------	---

RNAV (GPS) RWY 18

OLIVE BRANCH (OLV)

⚠

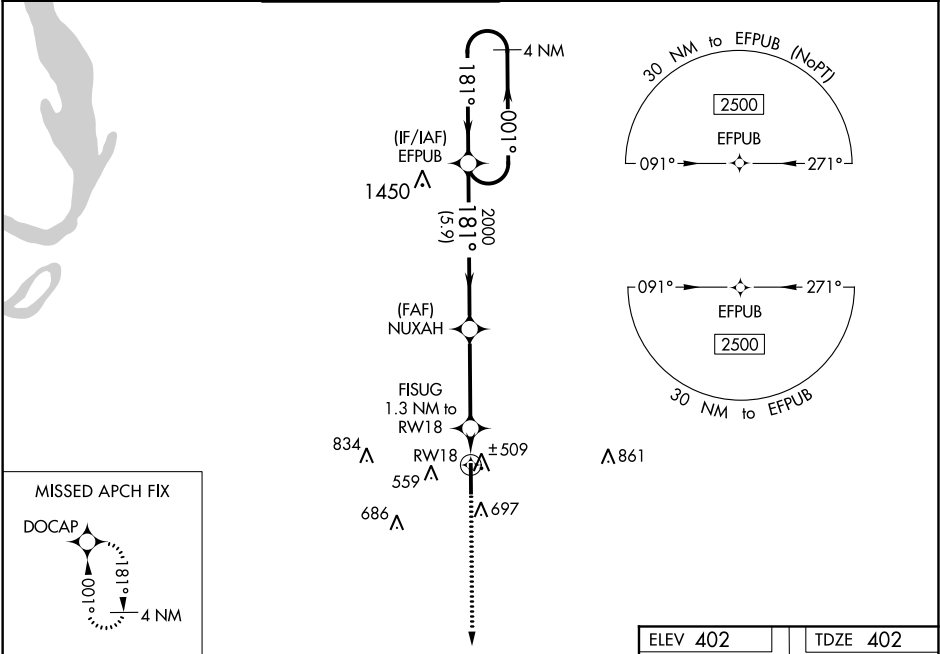
For uncompensated Baro-VNAV systems, LNAV/VNAV NA below -15°C (5°F) or above 54°C (130°F). DME/DME RNP-0.3 NA. When local altimeter setting not received, use Memphis Int altimeter setting and increase all DA 32 feet and all MDA 40 feet; increase LNAV/VNAV all Cats visibility 1⁄8 mile and Circling Cats C and D visibility 1⁄4 mile.

MALSR

MISSED APPROACH:

Climb to 2000 direct  
DOCAP and hold.

ATIS <b>119.925</b>	MEMPHIS APP CON <b>125.8 338.3</b>	OLIVE BRANCH TOWER ★ <b>125.275 (CTAF) 0</b>	GND CON <b>121.2</b>	CLNC DEL <b>121.2</b>	CLNC DEL <b>121.3</b> (When twr closed)	UNICOM <b>122.95</b>
------------------------	---------------------------------------	---	-------------------------	--------------------------	---	-------------------------



4 NM Holding Pattern

EFPUB

2500 ← 001°

181° →

GP 3.00°

TCH 51

NUXAH

2000

FISUG 1.3 NM to RW18

RW18

5.9 NM

3.6 NM

1.3 NM

\* 860

\* LNAV only

2000

DOCAP

2000

CATEGORY	A	B	C	D
LPV DA		602-1⁄2	200 (200-1⁄2)	
LNAV/VNAV DA		691-1⁄2	289 (300-1⁄2)	
LNAV MDA	760-1⁄2	358 (400-1⁄2)	760-5⁄8	358 (400-5⁄8)
CIRCLING	1060-1	658 (700-1)	1060-13⁄4 658 (700-13⁄4)	1200-21⁄2 798 (800-21⁄2)

ELEV 402

TDZE 402

181° to RW18

81

AS

6000 X 100

TWR

36

HIRL Rwy 18-36