

WAAS CH <b>58224</b> <b>W18A</b>	APP CRS <b>182°</b>	Rwy Idg TDZE <b>23</b> Apt Elev <b>23</b>	<b>8497</b>
--	------------------------	---	-------------

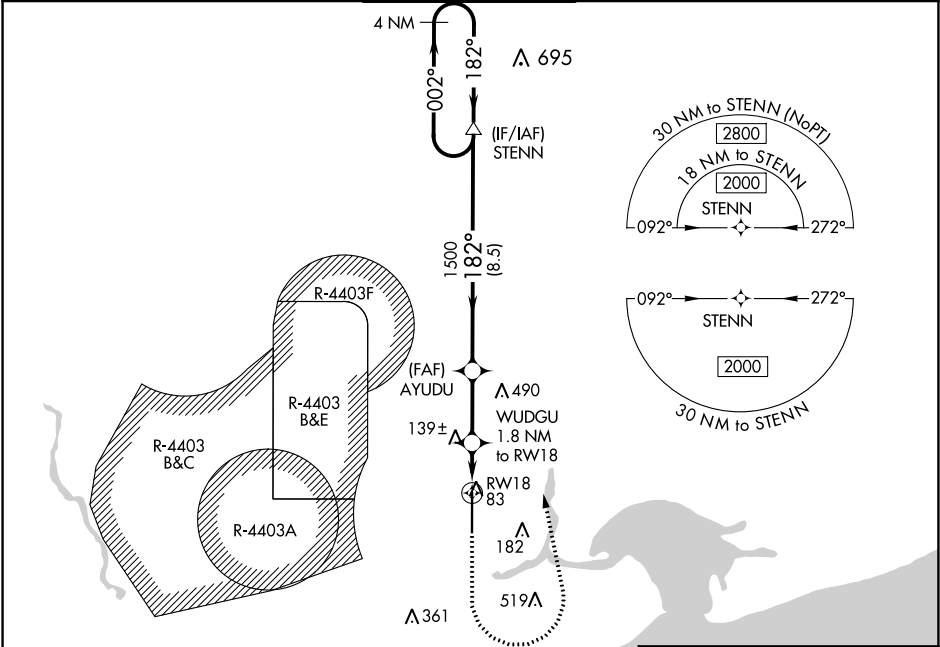
RNAV (GPS) RWY 18  
STENNIS INTL (HSA)

⚠ For uncompensated Baro-VNAV systems, LNAV/VNAV NA below -15°C (5°F) or above 54°C (130°F). Circling NA for Cat E west of Rwy 18-36. Baro-VNAV and VDP NA when using Gulfport altimeter setting. DME/DME RNP-0.3 NA. When local altimeter setting not received, use Gulfport altimeter setting: increase LPV DA to 247 feet; increase LNAV/VNAV DA to 373 feet; increase all MDA 60 feet and LNAV Cats C/D/E visibility 1/8 mile, and Circling Cats D/E visibility 1/4 mile. For inop MALSR, increase LNAV Cats C/D/E visibility to 1 mile. For inop MALSR when using Gulfport altimeter setting, increase LNAV Cat E visibility to 1 1/4 mile.

MALSR  
A5

MISSED APPROACH:  
Climb to 1400, then  
climbing left turn to  
2000 direct STENN  
and hold.

AWOS-3PT <b>118.375</b>	GULFPORT APP CON* <b>124.6 354.1</b>	STENNIS TOWER* <b>127.15</b> (CTAF) ①	GND CON <b>121.725</b>	UNICOM <b>122.95</b>
----------------------------	---	--	---------------------------	-------------------------



ELEV 23

TDZE 23

4 NM Holding Pattern

VGSI and RNAV glidepath not coincident (VGSI Angle 3.00/TCH 53).

GP 3.00° TCH 56

1500

182°

002°

2000

AYUDU

WUDGU 1.8 NM to RWY 18

1 NM to RWY 18\*

RWY 18

\* LNAV only.

CATEGORY	A	B	C	D	E
LPV DA	223-1/2 200 (200-1/2)				
LNAV/VNAV DA	326-1/2 303 (400-1/2)				
LNAV MDA	400-1/2 377 (400-1/2)		400-5/8 377 (400-5/8)		
CIRCLING	480-1 457 (500-1)		520-1 1/2 497 (500-1 1/2)	820-2 1/2 797 (800-2 1/2)	820-2 3/4 797 (800-2 3/4)

REIL Rwy 36 ①

HIRL Rwy 18-36 ①

SC-4, 03 DEC 2020 to 31 DEC 2020

SC-4, 03 DEC 2020 to 31 DEC 2020