

NDB HS	APP CRS	Rwy Idg	8497
221	181°	TDZE	23
		Apt Elev	23

NDB RWY 18

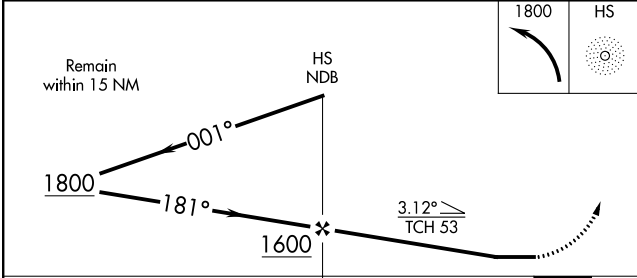
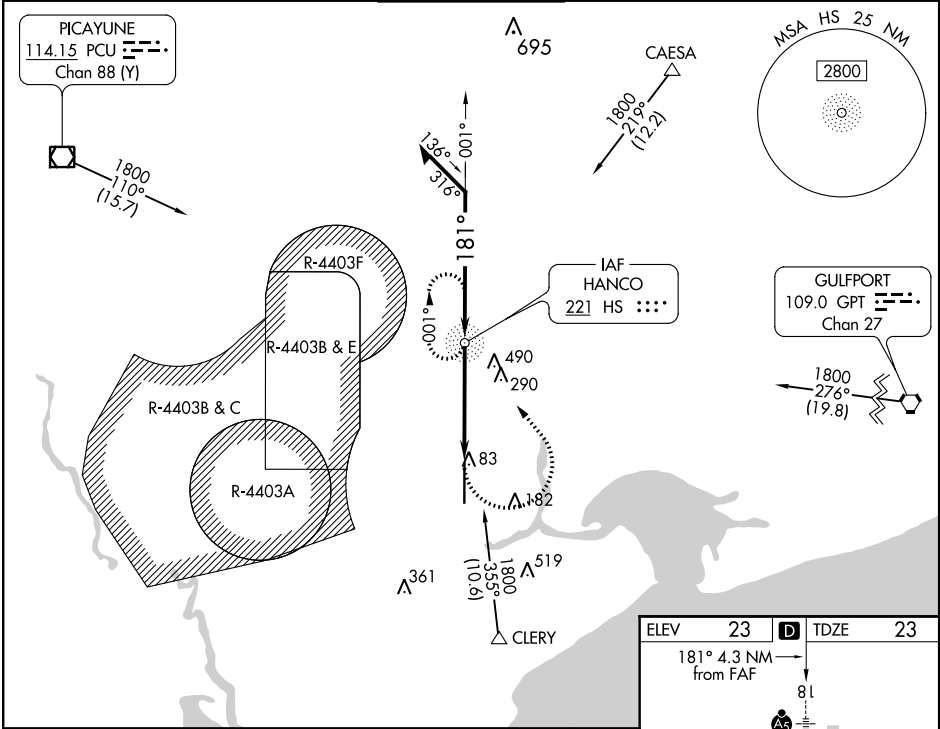
STENNIS INTL (HSA)

Procedure NA when R4403B and R4403E are active. Circling NA for Cat E west of Rwy 18-36.
⚠ When local altimeter setting not received use Gulfport altimeter setting and increase all MDAs 60 feet and increase S-18 Cat C/D/E and Circling Cat C visibility 1/8 SM and Circling Cat D/E visibility 1/4 SM. For inop ALS, increase S-18 Cat A/B visibility to 1 SM, and Cat C/D/E visibility to 1 1/2 SM. For inop ALS when using Gulfport altimeter setting, increase Cat C/D/E visibility to 1 3/4 SM.

MALSR

MISSED APPROACH: Climbing left turn to 1800 direct HS NDB and hold.

AWOS-3PT	GULFPORT APP CON★	STENNIS TOWER★	GND CON	UNICOM
118.375	124.6 354.1	127.15 (CTAF) 0	121.725	122.95



ELEV	23	TDZE	23
181° 4.3 NM from FAF			
81			
A5			
150 X 150			
TWR			
REIL Rwy 36			
HIRL Rwy 18-36			
FAF to MAP 4.3 NM			
Knots	60	90	120 150 180
Min:Sec	4:18	2:52	2:09 1:43 1:26

SC-4, 03 DEC 2020 to 31 DEC 2020

SC-4, 03 DEC 2020 to 31 DEC 2020