


| | | | |
|-----------|---------|----------|------|
| LOC I-HSA | APP CRS | Rwy Idg | 8497 |
| 110.35 | 182° | TDZE | 23 |
| | | Apt Elev | 23 |

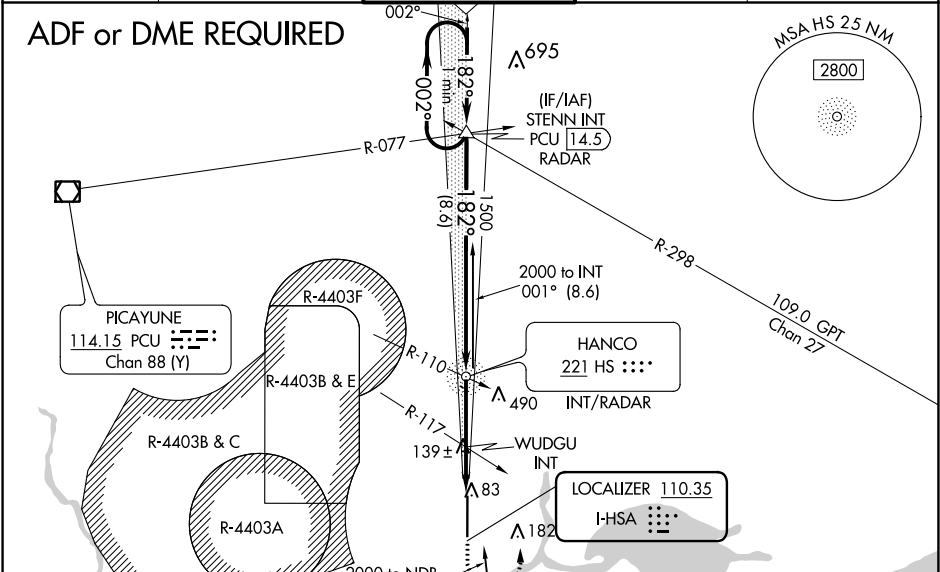
ILS Z or LOC Z RWY 18
STENNIS INTL (HSA)

⚠ Circling NA for Cat E W of Rwy 18-36. ADF or DME required. When local altimeter setting not received, use Gulfport altimeter setting: increase DA to 270 feet; increase all MDA 60 feet and S-LOC 18 Cats C/D/E visibility 1/8 mile, Circling Cat C visibility 1/8 mile and Cats D/E visibility 1/4 mile. WUDGU FIX minimums: increase S-LOC 18 Cats C/D/E visibility 1/8 mile, and Circling Cats D/E 1/4 mile. For inop MALS, increase S-ILS 18 Cat E visibility to 3/4 mile, and S-LOC 18 Cats C/D/E visibility to 1 1/8 mile. WUDGU FIX minimums: increase S-LOC 18 Cats C/D/E visibility to 1 mile. For inop MALS when using Gulfport altimeter setting, increase S-ILS 18 Cat E visibility to 3/4 mile and S-LOC Cat E visibility to 1 1/8 mile. WUDGU FIX minimums: increase S-LOC 18 Cat E visibility to 1 1/4 mile.

MALS 

MISSED APPROACH: Climb to 700 then climbing left turn to 2000 on heading 010° and on PCU VOR/DME R-077 to STENN INT and hold.

| | | | | |
|----------|-------------------|-----------------|---------|--------|
| AWOS-3PT | GULFPORT APP CON* | STENNIS TOWER* | GND CON | UNICOM |
| 118.375 | 124.6 354.1 | 127.15 (CTAF) 0 | 121.725 | 122.95 |



| | | | |
|---|--|----------------------|---------|
| VGSI and ILS glidepath not coincident (VGSI Angle 3.00/TCH 53). | | ELEV 23 | TDZE 23 |
| One Minute Holding Pattern | | 182° 4.3 NM from FAF | |
| 2000 ← 002° 182° → 1500 | | 81 | |
| GS 3.00° TCH 56 | | 051 X 497 | |
| 2000 ← 002° 182° → 1500 | | TWR | |
| CATEGORY | | ELEV 23 | |
| S-ILS 18 | | 182° 4.3 NM from FAF | |
| S-LOC 18 | | 81 | |
| CIRCLING | | 051 X 497 | |
| WUDGU FIX MINIMUMS (DUAL VOR RECEIVERS REQUIRED) | | TWR | |
| S-LOC 18 | | ELEV 23 | |
| CIRCLING | | 182° 4.3 NM from FAF | |
| REIL Rwy 36 | | 81 | |
| HIRL Rwy 18-36 | | 051 X 497 | |
| FAF to MAP 4.3 NM | | TWR | |
| Knots | | ELEV 23 | |
| Min:Sec | | 182° 4.3 NM from FAF | |

SC-4, 03 DEC 2020 to 31 DEC 2020

SC-4, 03 DEC 2020 to 31 DEC 2020