

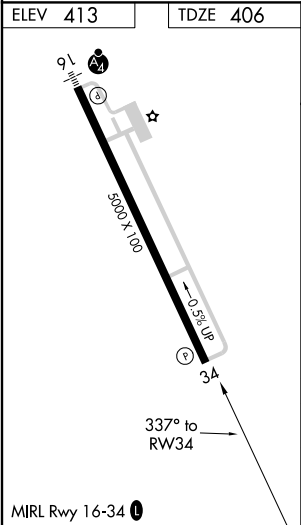
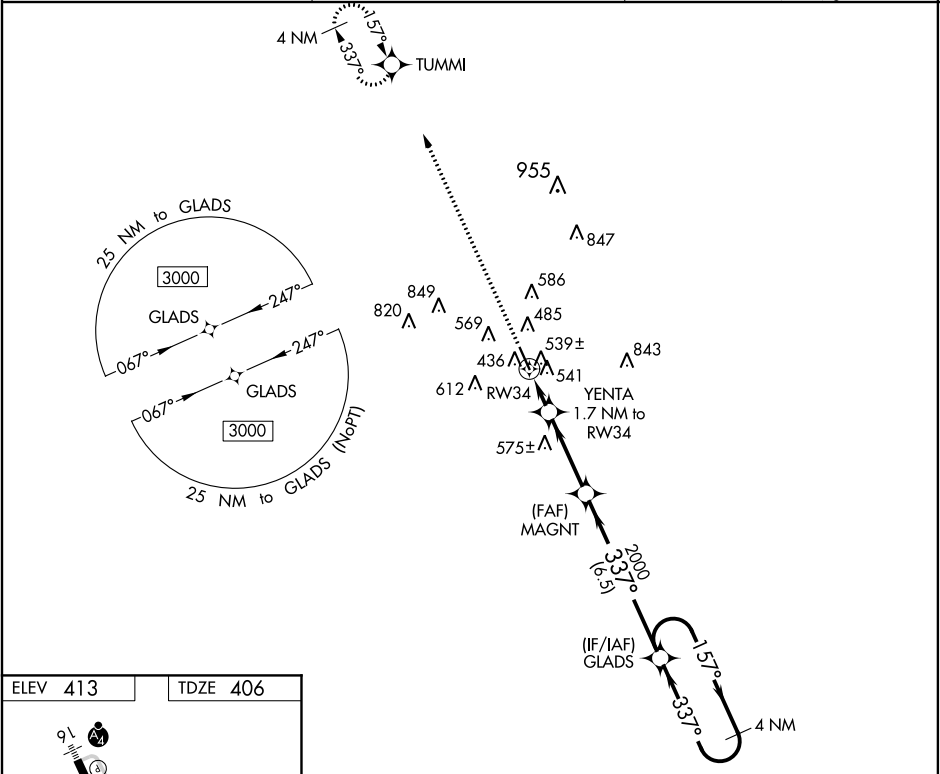
RNP APCH.  
For uncompensated Baro-VNAV systems, LNAV/VNAV NA below -4°C (25°F)  
or above 54°C (130°F).

MISSED APPROACH: Climb to 3000 direct TUMMI and hold.

ASOS  
**119.025**

HOUSTON CENTER  
**126.8 327.8**

UNICOM  
**123.05 (CTAF) 0**



3000	TUMMI	VGSi and RNAV glidepath not coincident (VGSi Angle 3.00/TCH 40).		4 NM
		GLADS		Holding Pattern
*LNAV only	YENTA 1.7 NM to RW34	MAGNT	2000	157°
	*1.2 NM to RW34		2000	337°
				GP 3.00° TCH 50
	1.2 NM	0.5	3.2 NM	6.5 NM
CATEGORY	A	B	C	D
LPV DA		606-3/4	200 (200-3/4)	
LNAV/VNAV DA		739-1	333 (400-1)	
LNAV MDA	800-1	394 (400-1)	800-1 1/8	394 (400-1 1/8)
CIRCLING	880-1	467 (500-1)	940-1 1/2 527 (600-1 1/2)	1160-2 1/2 747 (800-2 1/2)