

LOC I-MCB <b>109.1</b>	APP CRS <b>157°</b>	Rwy Idg TDZE Apt Elev <b>5000</b> <b>413</b> <b>413</b>
---------------------------	------------------------	--

ILS or LOC RWY 16

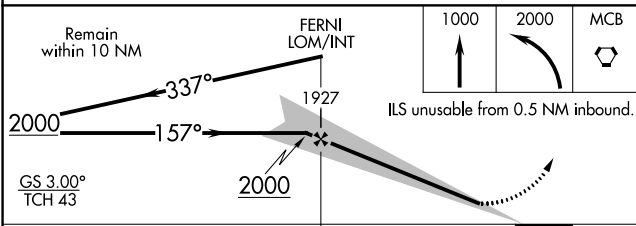
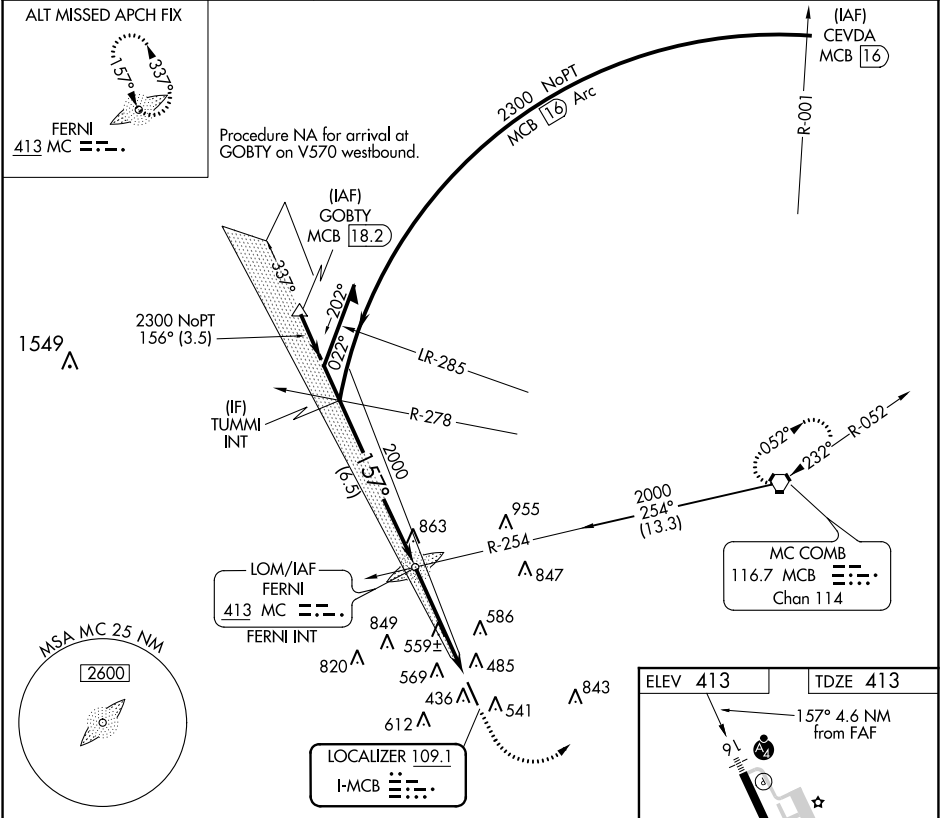
MC COMB/PIKE COUNTY/JOHN E LEWIS FIELD (MCB)

**▼** Inop table does not apply to S-ILS 16 all Cats and S-LOC 16 Cats C and D.

**▲** MALSF

MISSED APPROACH: Climb to 2000 then climbing left turn to 2000 direct MCB VORTAC and hold.

ASOS <b>119.025</b>	HOUSTON CENTER <b>126.8 327.8</b>	UNICOM <b>123.05 (CTAF) 0</b>
------------------------	--------------------------------------	----------------------------------



CATEGORY	A	B	C	D
S-ILS 16	632-3/4		219 (300-3/4)	
S-LOC 16	820-3/4 407 (500-3/4)		820-1/4 407 (500-1/4)	
CIRCLING	880-1 467 (500-1)		940-1 1/2 527 (600-1 1/2)	
			1160-2 1/2 747 (800-2 1/2)	

ELEV 413	TDZE 413
157° 4.6 NM from FAF	
MIRL Rwy 16-34	
FAF to MAP 4.1 NM	
Knots	60 90 120 150 180
Min:Sec	4:06 2:44 2:03 1:38 1:22

ILS or LOC RWY 16

SC-4, 03 DEC 2020 to 31 DEC 2020

SC-4, 03 DEC 2020 to 31 DEC 2020