

WAAS

CH **40120**

W36A

APP CRS

003°

Rwy Idg

5404

TDZE

173

Apt Elev

173

RNAV (GPS) RWY 36

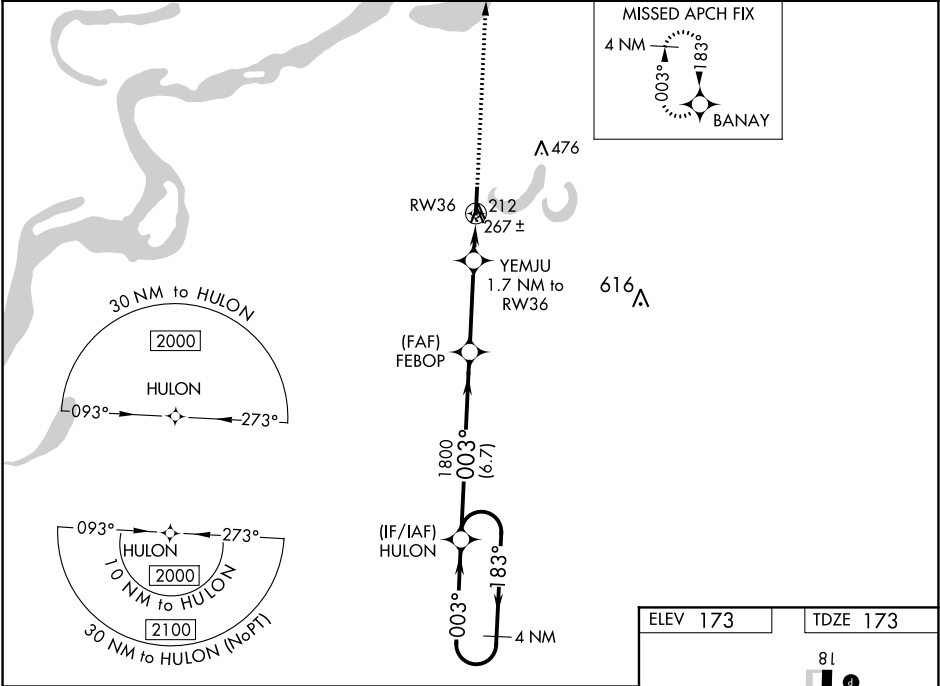
FLETCHER FIELD (CKM)

⚠ For uncompensated Baro-VNAV systems, LNAV/VNAV NA below -15°C (5°F) or above 54°C (130°F). DME/DME RNP-0.3 NA. When local altimeter setting not received, use Tunica altimeter setting: increase LPV DA to 537 feet, LNAV/VNAV DA to 508 feet and all MDA 60 feet; increase LPV all Cats visibility ¼ SM, LNAV/VNAV all Cats visibility ⅓ SM, and LNAV Cat C/D visibility ½ SM. Baro-VNAV NA with Tunica altimeter setting. Straight-in/Circling Rwy 36 NA at night. Rwy 36 helicopter visibility reduction below 1 SM NA.

MISSED APPROACH:

Climb to 2000 direct BANAY and hold.

AWOS-3 120.675	MEMPHIS CENTER 135.3 335.8	UNICOM 122.8 (CTAF) 0
--------------------------	--------------------------------------	---------------------------------



4 NM Holding Pattern

VGSI and RNAV glidepath not coincident (VGSI Angle 3.00/TCH 26).

2000 BANAY

2000 ← 183°

003° →

HULON

FEBOP

YEMJU 1.7 NM to RW36

RW36

*LNAV only.

1800

*740

6.7 NM

3.3 NM

1.7

GP 3.00°

TCH 45

CATEGORY	A	B	C	D
LPV DA		477-1	304 (400-1)	
LNAV/VNAV DA		448-1	275 (300-1)	
LNAV MDA		520-1	347 (400-1)	
CIRCLING	740-1	567 (600-1)	780-1¾ 607 (700-1¾)	780-2 607 (700-2)

ELEV 173

TDZE 173

81

5404 X 100

220

36

003° to RW36

REIL Rwy 18 and 36 0

MIRL Rwy 18-36 0