

WAAS CH 72619 W18A	APP CRS 183°	Rwy Idg 5404 TDZE 173 Apt Elev 173
--	------------------------	---

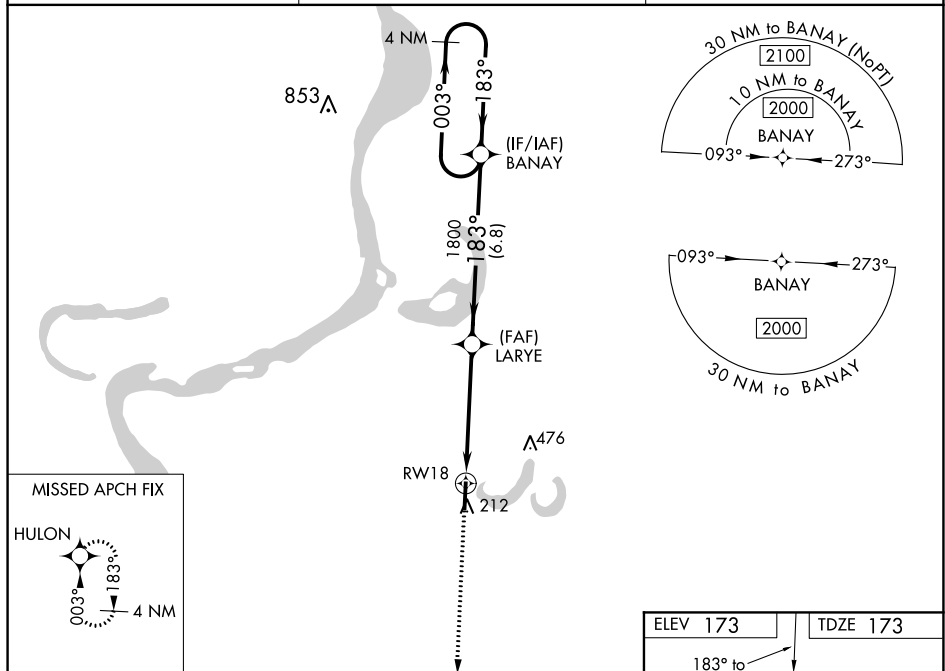
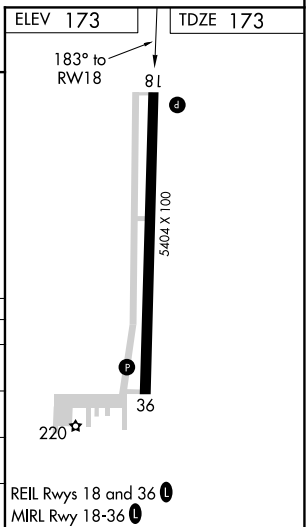
RNAV (GPS) RWY 18

▼ For uncompensated Baro-VNAV systems, LNAV/VNAV NA below -15°C (5°F) or above 54°C (130°F). Baro-VNAV and VDP NA when using Tunica altimeter setting.

▲ DME/DME RNP-0.3 NA. When local altimeter setting not received, use Tunica altimeter setting: increase LPV DA to 483 feet, LNAV/VNAV DA to 647 feet and all MDA 60 feet; increase LPV all Cats visibility $\frac{1}{2}$ SM, LNAV/VNAV all Cats visibility $\frac{1}{4}$ SM, and LNAV Cat C/D visibility $\frac{1}{2}$ SM. Circling Rwy 36 NA at night.

MISSED APPROACH:
Climb to 2000 direct
HULON and hold.

AWOS-3 120.675	MEMPHIS CENTER 135.3 335.8	UNICOM 122.8 (CTAF) 0
--------------------------	--------------------------------------	---------------------------------

[illegible]

RNAV (GPS) RWY 18 FLETCHER FIELD (CKM)