

WAAS CH 40320 W24A	APP CRS 238°	Rwy Idg TDZE Apt Elev	5399 9 9
--	------------------------	-----------------------------	-------------------------------------

RNAV (GPS) RWY 24
HARRY P WILLIAMS MEMORIAL (PTN)

RNP APCH.

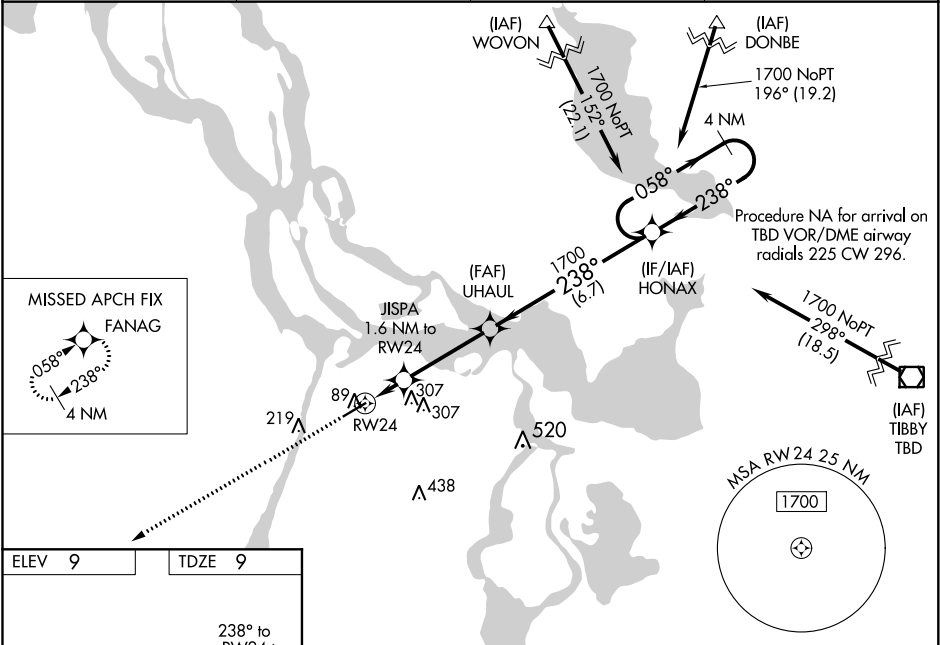
⚠ For uncompensated Baro-VNAV systems, LNAV/VNAV NA below -15°C or above 54°C. Circling NA to Rwy 4W and 22W. Baro-VNAV and VDP NA when using New Iberia altimeter setting. When local altimeter setting not received, use New Iberia altimeter setting and increase all DA 82 feet and all MDA 100 feet; increase LNAV/VNAV all Cats visibility ½ mile, LNAV Cat C visibility ¼ mile and Circling Cat C visibility ½ mile. For inop MALSR, increase LNAV Cat C visibility to 1 mile. For inop MALSR, when using New Iberia altimeter setting, increase LPV all Cats visibility to ¾ mile, LNAV/VNAV all Cats visibility to 1½ mile, and LNAV Cat C visibility to 1¾ mile. When VGSI inop, Circling Rwy 6 NA at night.

MALSR

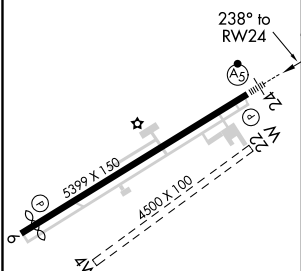


MISSED APPROACH:
Climb to 2000 direct
FANAG and hold.

AWOS-3PT 134.575	NEW ORLEANS APP CON 124.3 350.35	CLNC DEL 124.3	UNICOM 122.8 (CTAF) 0
----------------------------	--	--------------------------	---------------------------------



ELEV 9	TDZE 9
---------------	---------------



2000	FANAG	UHAUL	HONAX	4 NM Holding Pattern
*LNAV only		JISPA 1.6 NM to RW24	1700	238°
RW24		*1.1 NM to RW24	*560	1700
1.1 NM		0.5	3.6 NM	6.7 NM
CATEGORY	A	B	C	D
LPV DA	209-½ 200 (200-½)			NA
LNAV/VNAV DA	259-½ 250 (300-½)			NA
LNAV MDA	400-½	391 (400-½)	400-5/8 391 (400-5/8)	NA
CIRCLING	520-1 511 (600-1)	580-1 571 (600-1)	660-1¾ 651 (700-1¾)	NA

REIL Rwy 6
MIRL Rwy 6-24 0