

VOR/DME-A  
MOREHOUSE MEMORIAL (BQP)

**MISSED APPROACH:** Climb to 2000 then climbing right turn to 3000 via MLU R-038 to GALIO/MLU 15.6 DME and hold.

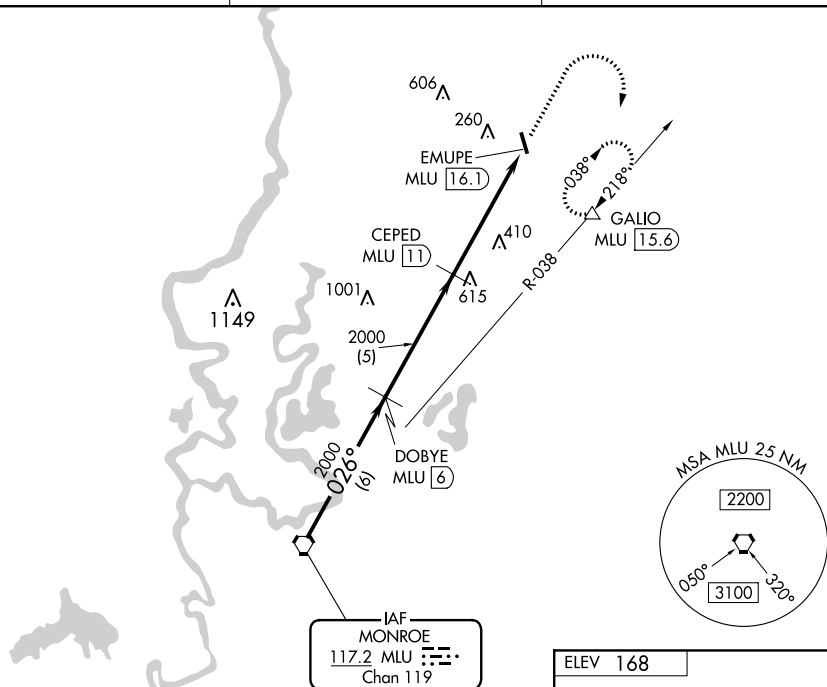
UNICOM  
122.8 (CTAF) 

Diagram illustrating the layout of MIRA 16-34. The runway is oriented 026° 5.1 NM from FAF. The diagram shows the runway (16-34), taxiway (A007 X 100), and the location of the navigation aid (star symbol). The runway is labeled with '91' at the top and '34' at the bottom. The taxiway is labeled 'A007 X 100'. The navigation aid is marked with a star symbol. The diagram also shows the runway's orientation relative to the FAF (Final Approach Fix) and the runway's length (1000 feet).