

FORT POLK, LOUISIANA

RNAV (GPS) RWY 34

APCH CRS	Rwy Idg	4107
338°	THRE	278
	Arpt Elev	330

AL-5096 [USA]

POLK AAF (KPOE)

▼ * When ALS inop, increase CAT AB vis to 1 mile, CAT CD vis to 1½ mile.

ALSF-1



MISSED APPROACH: Climb to 2000 direct BITAY and on track 340° to COCOS and hold.

ATIS
134.85 282.2

POLK APP CON
123.7 261.3

POLK TOWER
119.0 257.75

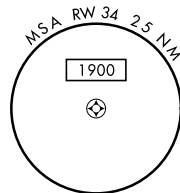
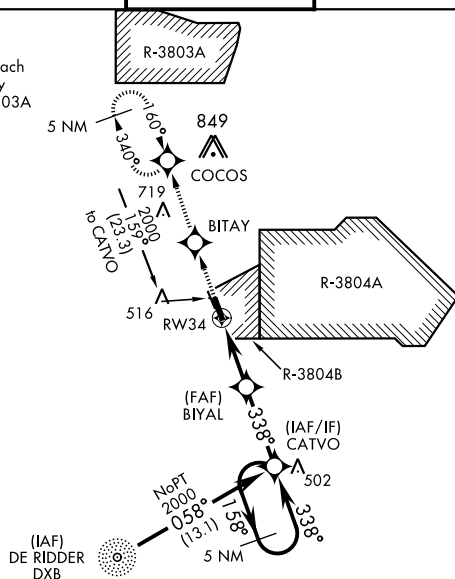
GND CON
121.8 239.25

ASR/PAR

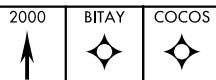
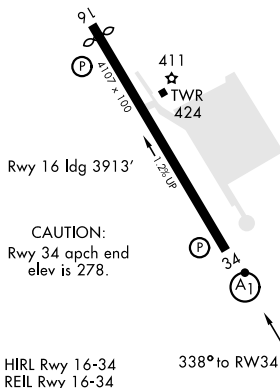
DME/DME RNP-0.3 NA

CAUTION: Pilots using this approach must acquaint themselves with any activities in R-3804A, B and R-3803A located 6 NM north of COCOS.

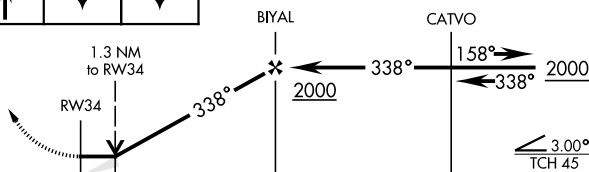
RADAR required for arrivals at DXB NDB and CATVO.



ELEV 330 THRE 278



VGSI and descent angles not coincident.



CATEGORY	A	B	C	D
LNAV MDA*	760-34 482 (500-34)	760-1 482 (500-1)	820-1½ 880-2 490 (500-1½)	550 (600-2)
CIRCLING	820-1 490 (500-1)			

FORT POLK, LOUISIANA

31° 03' N-93° 11' W

POLK AAF (KPOE)

Amdt 1A 26MAR20

RNAV (GPS) RWY 34