


RNAV (GPS) RWY 16

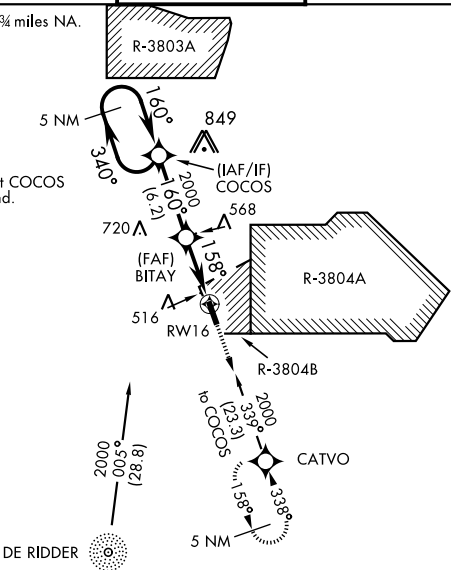
APCH CRS	Rwy Idg	3913
158°	THRE	328
	Arpt Elev	330

AL-5096 [USA]

POLK AAF (KPOE)

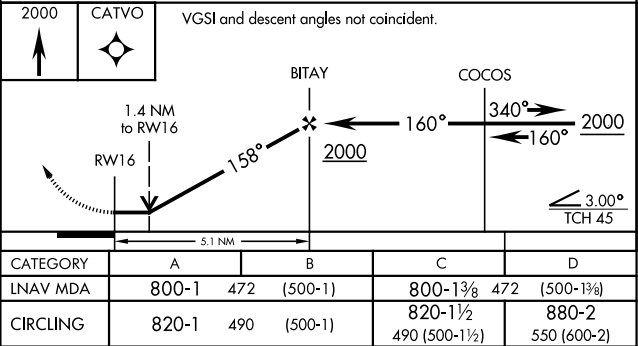
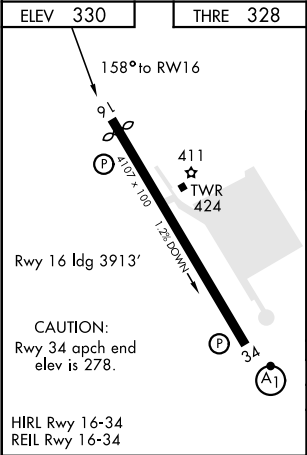
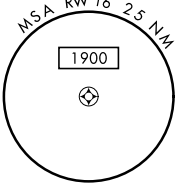
			MISSED APPROACH: Climb to 2000 direct CATVO and hold.	
ATIS 134.85 282.2	POLK APP CON 123.7 261.3	POLK TOWER 119.0 257.75	GND CON 121.8 239.25	ASR/PAR

Helicopter visibility reduction below 3/4 miles NA.
DME/DME RNP-0.3 NA



RADAR required for arrivals at
DXB NDB and CATVO.

CAUTION: Pilots using this approach
must acquaint themselves with any
activities in R-3804A, B and R-3803A
located 6 NM north of COCOS.



RNAV (GPS) RWY 16

SC-4, 03 DEC 2020 to 31 DEC 2020

SC-4, 03 DEC 2020 to 31 DEC 2020