

WAAS CH 56215 W33A	APP CRS 332°	Rwy Idg 6500 TDZE 11 Apt Elev 15
--	------------------------	---

RNAV (GPS) RWY 33
LAKE CHARLES RGNL (LCH)

RNP APCH.

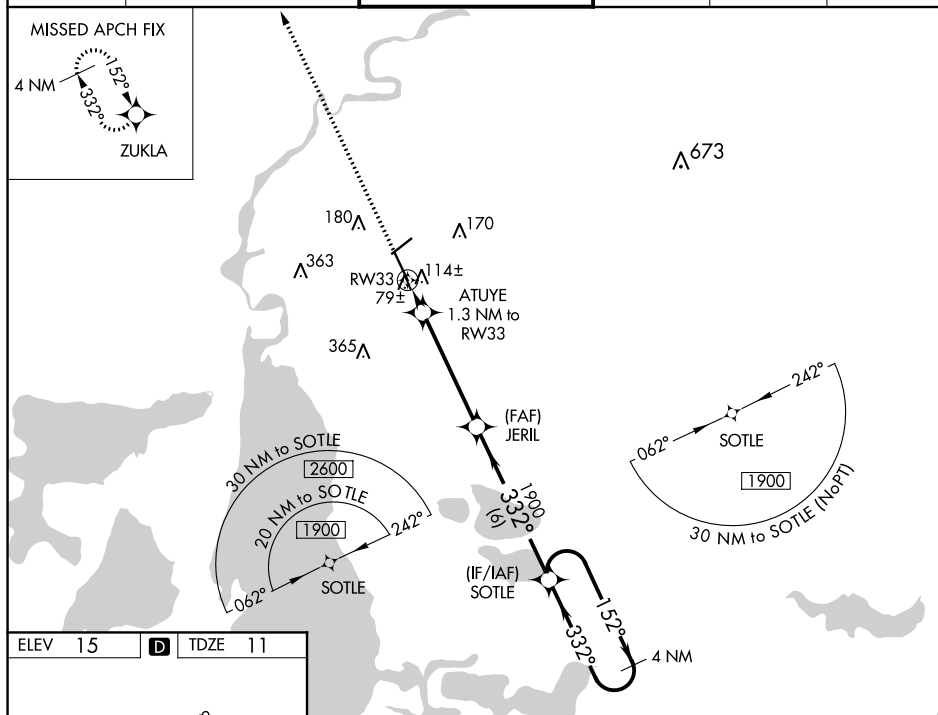
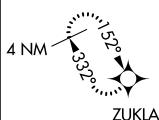
T For uncompensated Baro-VNAV systems, LNAV/VNAV NA below -3°C (27°F) or above 43°C (109°F). For inop MALSF, increase LNAV/VNAV all Cats visibility to 7/8 and LNAV all Cats visibility to 1 mile.

MALSF



ATIS 118.75	LAKE CHARLES APP CON ★ 119.35 353.75	LAKE CHARLES TOWER ★ 120.7 (CTAF) 0 257.8	GND CON 121.8	CLNC DEL 126.25	UNICOM 122.95
-----------------------	--	---	-------------------------	---------------------------	-------------------------

MISSED APCH FIX



REIL Rwy 5 and 23
MIRL Rwy 5-23
HIRL Rwy 15-33

1700
↑
ZUKLA

*RNAV only.

RW33

ATUYE
1.3 NM
to RW33

JERIL
1900

SOTLE

4 NM
Holding Pattern

152°
332°

1900

GP 3.00°
TCH 50

1.3 NM 4.5 NM 6 NM