
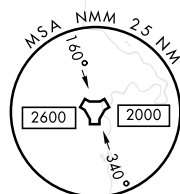
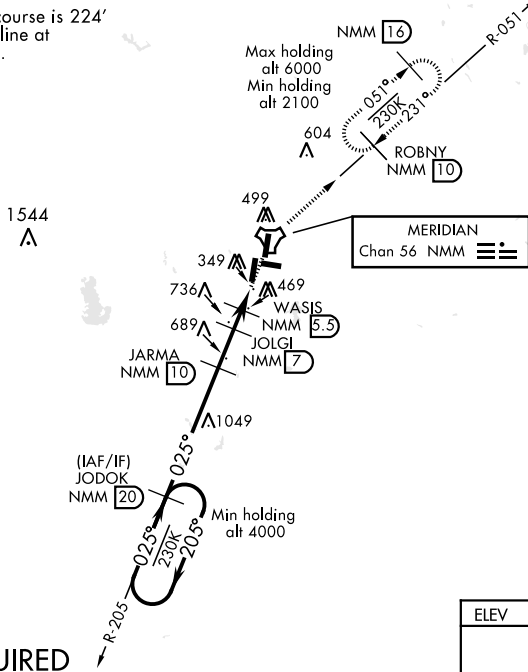


## TACAN RWY 1L

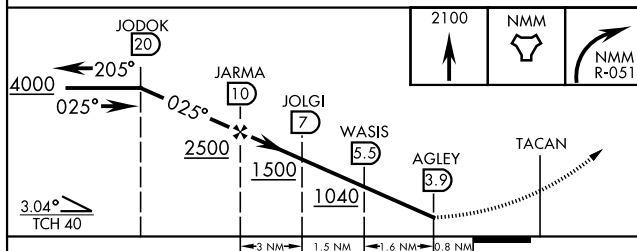
TACAN NMM Chan <b>56</b>	APCH CRS <b>025°</b>	Rwy Idg <b>8003</b> TDZE <b>254</b> Arpt Elev <b>316</b>	JAL-5079 [USN]      MERIDIAN NAS (MC CAIN FIELD) (KNMM)				
<b>▼</b> * When ALS inop, increase CAT AB vis to 1 mile; CAT CDE vis to 1 1/2 miles.			ALSF-1 		MISSED APPROACH: Climb to 2100 direct NMM TACAN then via R-051 to ROBNY and hold.		
ATIS ★ <b>290.525</b>	MERIDIAN APP CON <b>120.95 276.4</b>		NAVY MC CAIN TOWER ★ <b>126.2 340.2</b>		GND CON <b>336.4</b>	CLNC DEL <b>301.0</b>	ASR/ PAR

The final apch course is 224' from rwy centerline at 3000' from thld.



## RADAR REQUIRED

EMERG SAFE ALT 100 NM 3700



CATEGORY	A	B	C	D	E
S-1L *	760-1/2	506 (500- 1/2)	760-1	506 (500-1)	
CIRCLING	840-1	524 (600-1)	840-1 1/2 524 (600-1 1/2)	880-2 564 (600-2)	1080-2 3/4 764 (800-2 3/4)

