

HI-TACAN RWY 1L

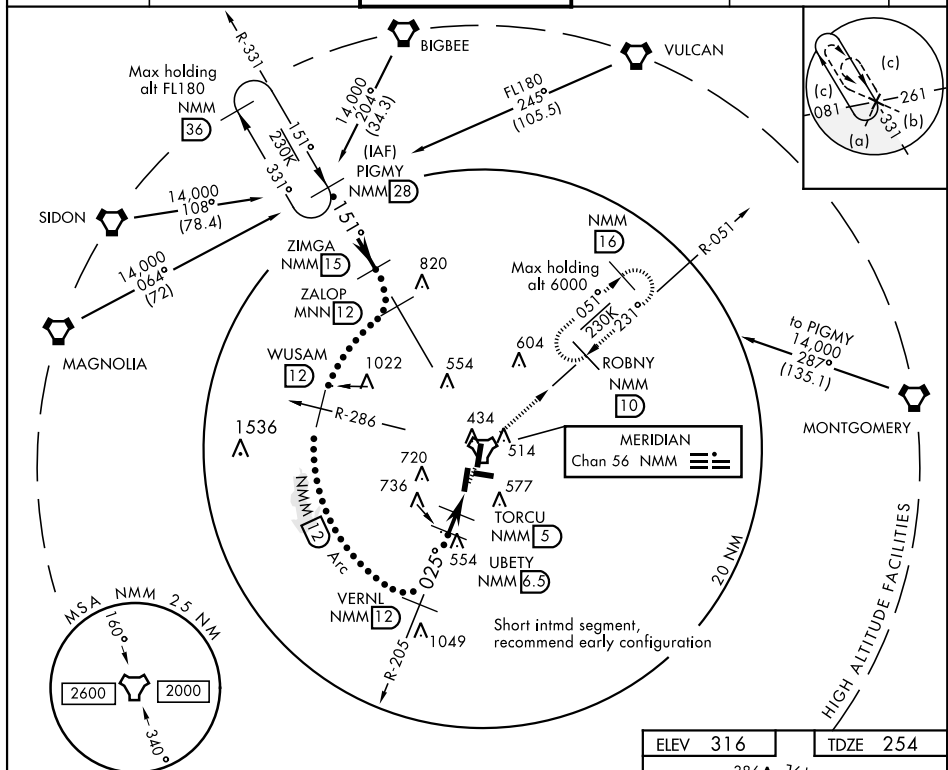
TACAN Chan 56	NMM	APCH CRS 025°	Rwy Idg 8003 TDZE 254 Arpt Elev 316	JAL-5079 [USN]	MERIDIAN NAS (MC CAIN FIELD) (KNMM)
-------------------------	-----	-------------------------	--	----------------	-------------------------------------

T * When ALS inop, increase CAT CDE vis to 1 3/8 miles.

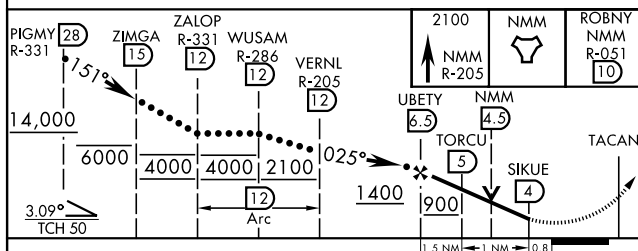


MISSED APPROACH: Climb to 2100 via NMM R-205 to NMM TACAN then via R-051 to ROBNY and hold.

ATIS ★ 290.525	MERIDIAN APP CON 120.95 276.4	NAVY MC CAIN TOWER ★ 126.2 340.2	GND CON 336.4	CLNC DEL 301.0	ASR/ PAR
-------------------	----------------------------------	-------------------------------------	------------------	-------------------	-------------



EMERG SAFE ALT 100 NM 3700



CATEGORY	C	D	E
S-1L *	760-1	506	(500-1)
CIRCLING	840-1½ 524 (600-1½)	880-2 564 (600-2)	1080-2¾ 764 (800-2¾)

