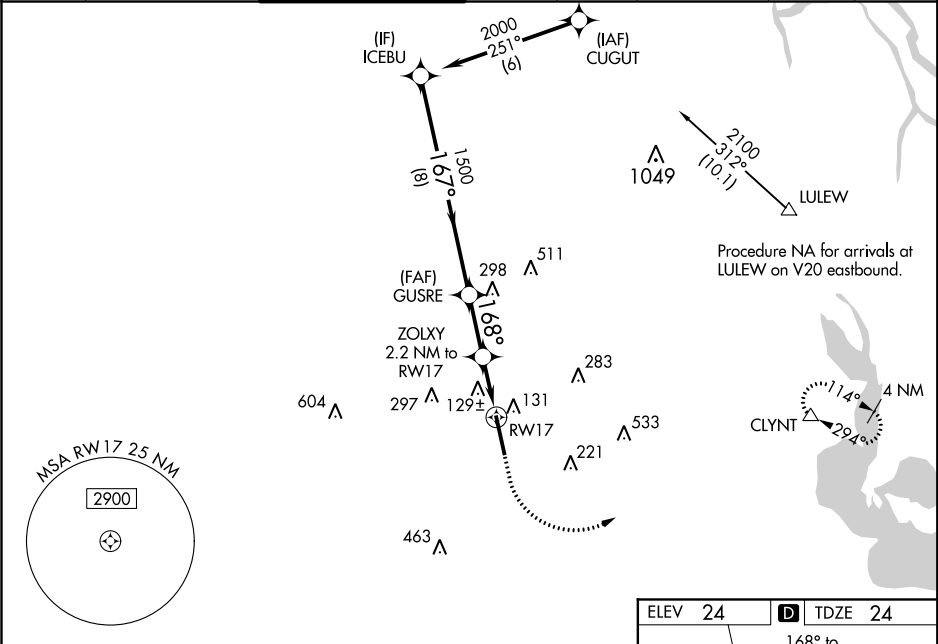


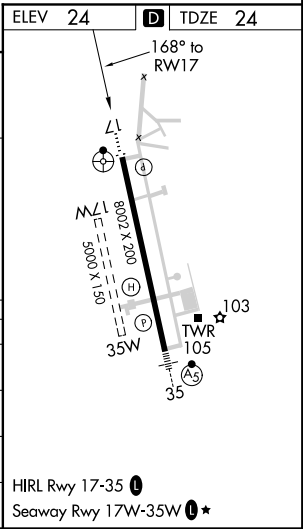
WAAS CH 82501 W17A	APP CRS 168°	Rwy Idg 8002 TDZE 24 Apt Elev 24
--	------------------------	---

RNAV (GPS) RWY 17
ACADIANA RGNL (ARA)

RNP APCH. ▼ Circling NA to Rwy 17W and 35W. Inop table does not apply to LPV. For inop ALS, increase LNAV/VNAV all Cats visibility to 1¼ SM and LNAV Cats C/D visibility to 1 SM. For uncompensated Baro-VNAV systems, LNAV/VNAV NA below -3°C or above 54°C.					ODALS 	MISSED APPROACH: Climb to 480 then climbing left turn to 2000 direct CLYNT and hold.		
ASOS 133.325	LAFAYETTE APP CON ★ 121.1 268.7	ACADIANA TOWER ★ 125.0 (CTAF) 239.3	GND CON 121.7	CLNC DEL 121.7	CLNC DEL 118.05 (when twr closed)	UNICOM 122.95	0 ★ 122.7	



VGSI and RNAV glidepath not coincident.				
GP 3.00° TCH 51				
CATEGORY	A	B	C	D
LPV DA	274-¾		250 (300-¾)	
LNAV/VNAV DA	420-1½		396 (400-1½)	
LNAV MDA	380-¾ 356 (400-¾)		380-⅞ 356 (400-⅞)	
◻ CIRCLING	440-1 416 (500-1)		480-1 456 (500-1)	
	600-1½ 576 (600-1½)		680-2 656 (700-2)	



SC-4, 03 DEC 2020 to 31 DEC 2020

SC-4, 03 DEC 2020 to 31 DEC 2020