

WAAS CH 56413 W36A	APP CRS 359°	Rwy Idg 6508 TDZE 9 Apt Elev 10
--	------------------------	--

APP CRS
359°

Rwy Idg	6508
TDZE	9
Apt Elev	10

RNAV (GPS) RWY 36

HOUMA-TERREBONNE (HUM)

- ▼** Baro-VNAV NA when using Louis Armstrong New Orleans Intl altimeter setting.
- ▲** For uncompensated Baro-VNAV systems, LNAV/VNAV NA below -1.5°C (5°F) or above 49°C (120°F). DME/DME RNP-0.3 NA. Visibility reduction by helicopters NA. When local altimeter setting not received, use Louis Armstrong New Orleans Intl altimeter setting and increase all DA 77 feet and LPV and LNAV/VNAV all Cats visibility ¼ mile, increase all MDA 80 feet, LNAV Cats C/D visibility ¼ mile and Circling Cat D visibility ¼ mile.

MISSED APPROACH: Climb to 2300 direct RACEL and hold.

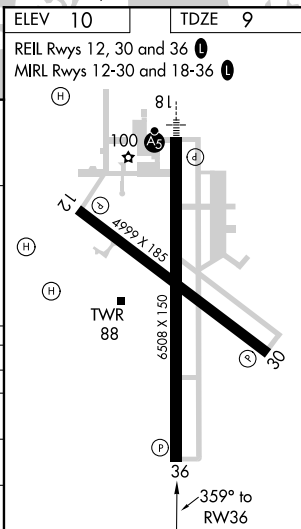
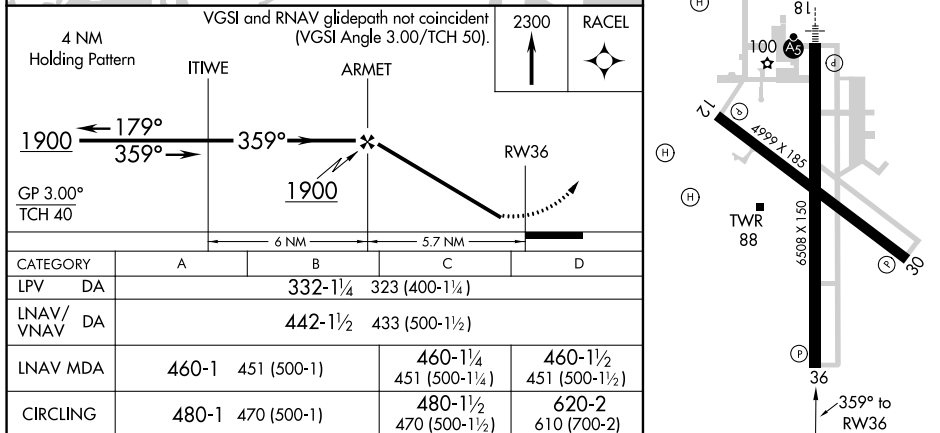
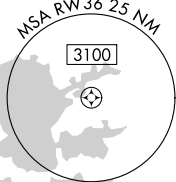
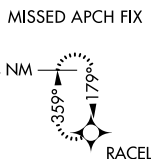
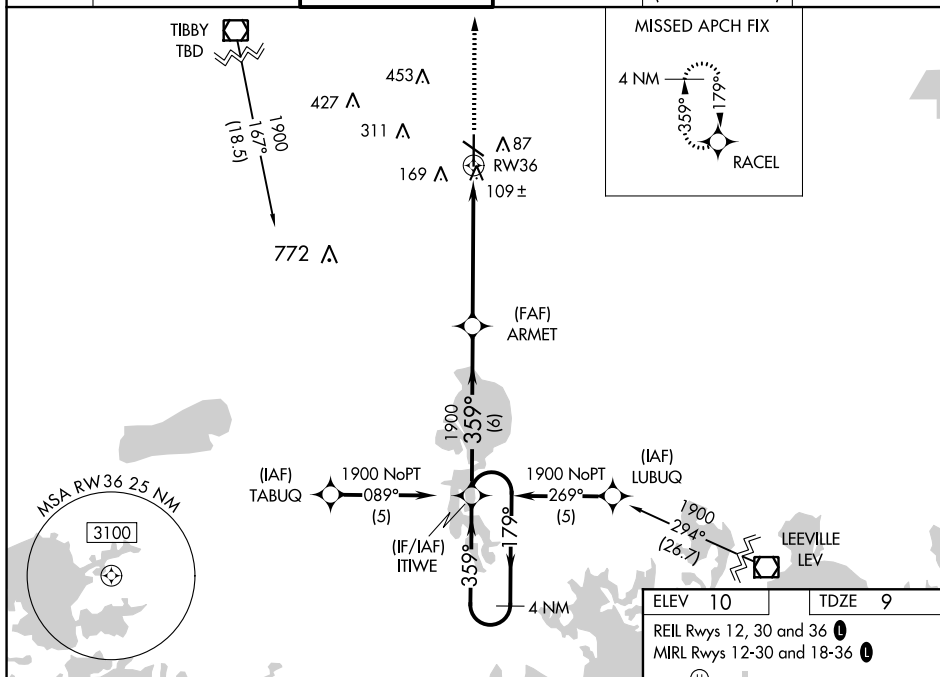
ATIS 120.25	NEW ORLEANS APP CON 118.9 350.35	HOUMA TOWER ★ 125.3 (CTAF) 0 346.3	GND CON 123.875	CLNC DEL 118.9 (When twr closed)	UNICOM 122.95
-----------------------	--	--	---------------------------	---	-------------------------

NEW ORLEANS APP CON
118.9 350.35

HOUMA TOWER ★
125.3 (CTAF) **L** 346.3

GND CON
123.875

CLNC DEL
118.9
(When twr closed)

UNICOM
122.95

HOUMA, LOUISIANA

Orig-A 21JUL16

29°34'N-90°40'W

HOUMA-TERREBONNE (HUM)
RNAV (GPS) RWY 36