

ILS or LOC/DME RWY 27
ESLER RGNL (ESF)

MALSR
A5

MISSED APPROACH: Climb to 1500 then climbing right turn to 3000 on heading 120° and on AEX VORTAC R-067 to LARTO/AEX 24.1 DME/RADAR and hold.

ESF ASOS 119,425	POLK APP CON 125.4 254.8	UNICOM 122.8 (CTAF) 0
----------------------------	------------------------------------	--

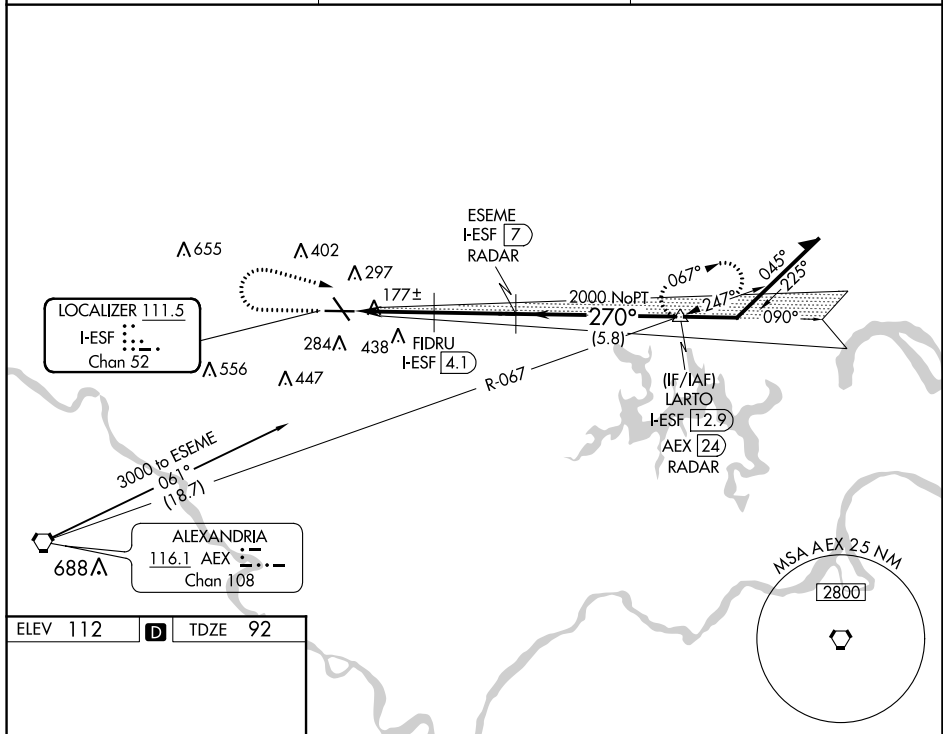


Diagram illustrating the ILS 27 approach for Runway 27 at Lemoore Naval Air Station. The diagram shows the 5601 x 150 runway, the 5999 x 150 taxiway, and the 270° 5.8 NM from FAF. It also shows the 270° 2.9 NM from the FAF, the 270° 2.1 NM from the FAF, and the 270° 1.2 NM from the FAF. The diagram includes a table of approach minima and a table of approach minima.

CATEGORY	A	B	C	D
S-ILS 27	292-1/2 200 (200-1/2)			
S-LOC 27	440-1/2 348 (400-1/2)	440-5/8 348 (400-5/8)		
CIRCLING	600-1 488 (500-1)	600-1 1/2 488 (500-1 1/2)	740-2 628 (700-2)	

SC-4, 03 DEC 2020 to 31 DEC 2020

SC-4, 03 DEC 2020 to 31 DEC 2020