

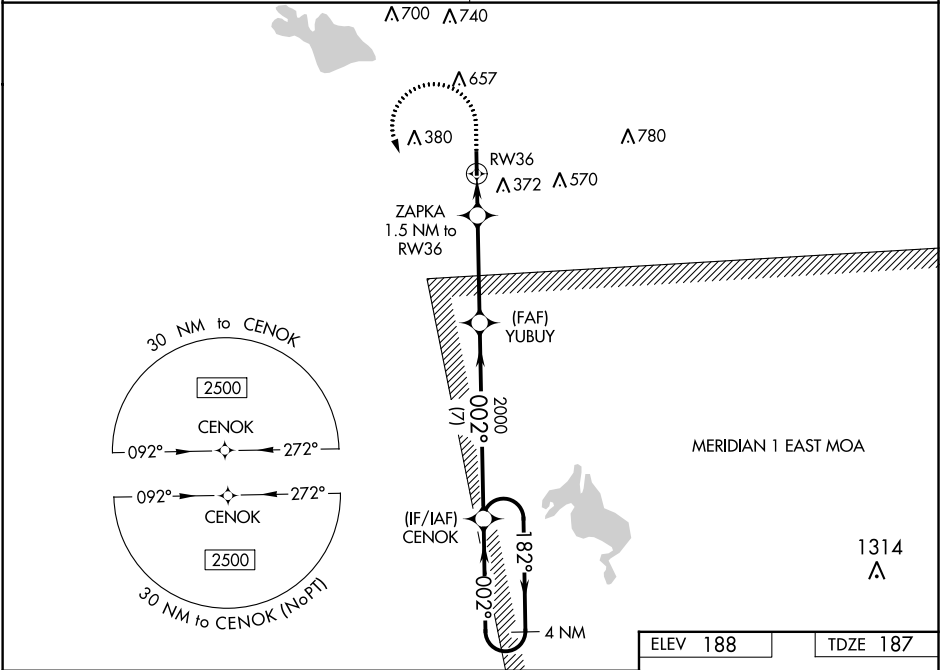
WAAS CH 61340 W36A	APP CRS 002°	Rwy Idg TDZE 187 Apt Elev 188
--	------------------------	---

RNAV (GPS) RWY 36

COLUMBUS-LOWNDES COUNTY (UBS)

RNP APCH.	MISSED APPROACH: Climb to 740 then climbing left turn to 2500 direct CENOK and hold.
-----------	--

COLUMBUS APP CON ★ 135.6 323.275	UNICOM 122.8 (CTAF) 0
--	---------------------------------



VGSI and RNAV glidepath not coincident (VGSI Angle 3.00/TCH 40).		ELEV 188		TDZE 187	
4 NM Holding Pattern		740		2500	
2500 ← 182°		002°		CENOK	
GP 3.10°		TCH 58		*RNAV only.	
002°		002°		YUBUY	
2000		2000		ZAPKA	
7 NM		3.8 NM		1.5 NM	
CENOK		YUBUY		ZAPKA	
2500		2000		RW36	
720		720		RW36	
CATEGORY		A		B	
LPV DA		527-1		340 (400-1)	
LNAV/VNAV DA		526-1		339 (400-1)	
LNAV MDA		600-1		413 (500-1)	
CIRCLING		760-1		780-1	
		572 (600-1)		592 (600-1)	
		1040-2½		1040-2¾	
		852 (900-2½)		852 (900-2¾)	
		MIRL Rwy 18-36		0	

RNAV (GPS) RWY 36