

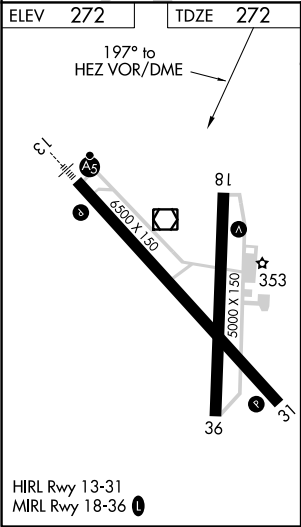
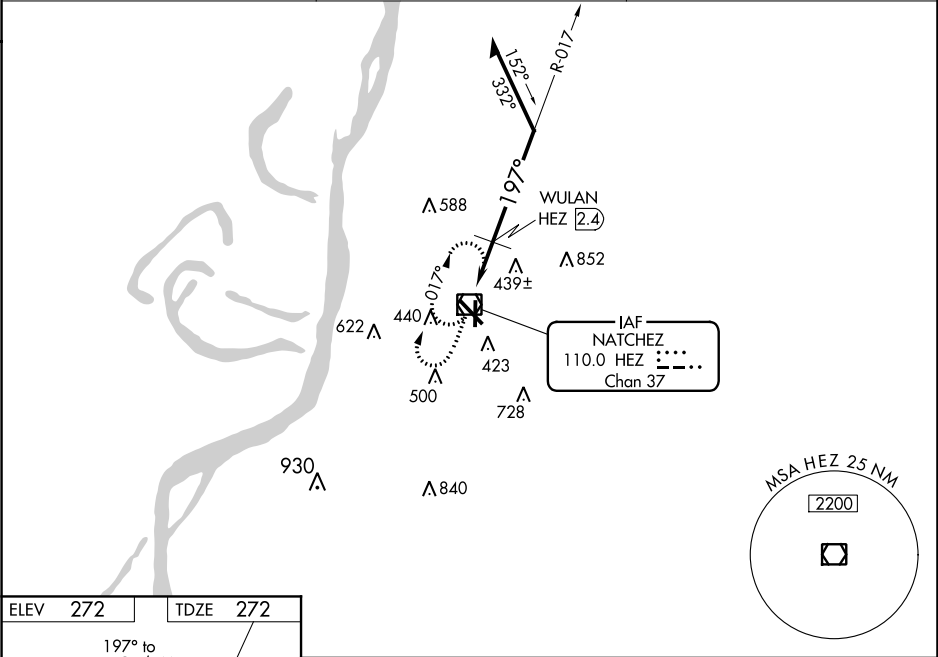
VOR/DME HEZ	APP CRS	Rwy Idg	5000
110.0	197°	TDZE	272
Chan 37		Apt Elev	272

VOR RWY 18

HARDY-ANDERS FIELD NATCHEZ-ADAMS COUNTY (HEZ)

<p>⚠</p> <p>Circling to Rwy 36 NA at night. Rwy 18 helicopter visibility reduction below 1 SM NA. Straight-in and Circling Rwy 18 NA at night.</p>	<p>MISSED APPROACH: Climb to 1100 then climbing right turn to 2000 in HEZ VOR/DME holding pattern, continue climb-in-hold to 2000.</p>
---	--

AWOS-3PT 124.675	HOUSTON CENTER 120.975 299.6	UNICOM 122.8 (CTAF) 0
---------------------	---------------------------------	---------------------------------



1100

2000

HEZ

↑

↗

HEZ VOR/DME

017°

WULAN HEZ 2.4

197°

2000

1020

2.4 NM

Remain within 10 NM

CATEGORY	A	B	C	D
S-18	1020-1 748 (800-1)	1020-1¼ 748 (800-1¼)	1020-2 748 (800-2)	748 (800-2)
C CIRCLING	1020-1 748 (800-1)	1020-1¼ 748 (800-1¼)	1020-2¼ 748 (800-2¼)	1220-3 948 (1000-3)
WULAN FIX MINIMUMS				
S-18	700-1 468 (500-1)	428 (500-1)	700-1¼ 748 (800-2¼)	428 (500-1¼) 948 (1000-3)
C CIRCLING	740-1 468 (500-1)	800-1 528 (600-1)	1020-2¼ 748 (800-2¼)	1220-3 948 (1000-3)

SC-4, 03 DEC 2020 to 31 DEC 2020

SC-4, 03 DEC 2020 to 31 DEC 2020