

WAAS CH 45734 W18A	APP CRS 181°	Rwy Idg 5000 TDZE 272 Apt Elev 272
--	------------------------	---

RNAV (GPS) RWY 18

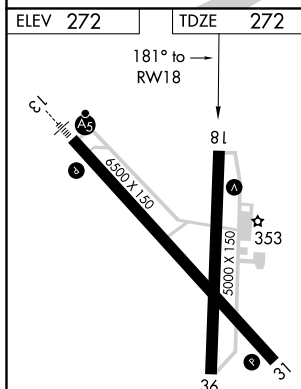
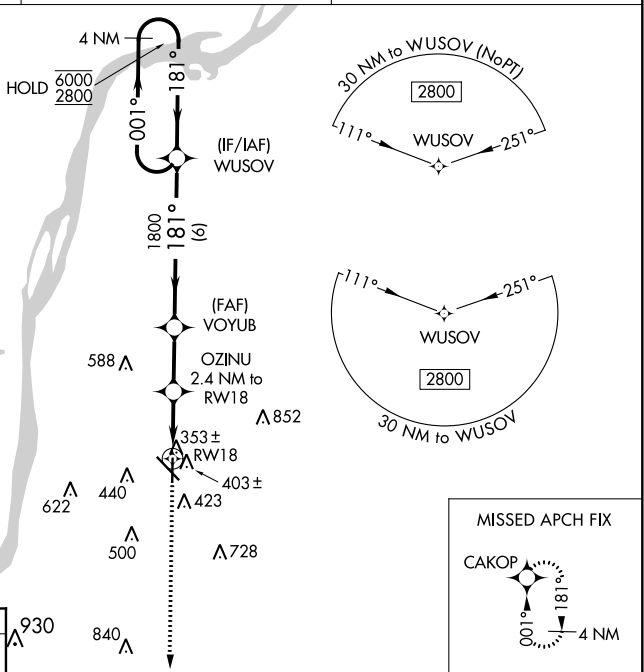
HARDY-ANDERS FIELD NATCHEZ-ADAMS COUNTY (HEZ)

RNP APCH.

T Circling Rwy 36 NA at night. Rwy 18 helicopter
A visibility reduction below $\frac{3}{4}$ SM NA.

MISSED APPROACH: Climb to 2800 direct CAKOP and hold.

AWOS-3PT 124.675	HOUSTON CENTER 120.975 299.6	UNICOM 122.8 (CTAF) 0
----------------------------	--	---------------------------------



HIRL Rwy 13-31
MIRL Rwy 18-36 **L**

CATEGORY	A	B	C	D
LP MDA	620-1 348 (400-1)			
LNAV MDA	660-1 388 (400-1)		660-1½ 388 (400-1½)	
CIRCLING	740-1 468 (500-1)	800-1 528 (600-1)	1020-2¼ 748 (800-2¼)	1220-3 948 (1000-3)

RNAV (GPS) RWY 18