

RNP APCH.

⚠

⚠

Circling to Rwy 36 NA at night. For uncompensated Baro-VNAV systems, LNAV/VNAV NA below -15° C or above 54° C. For inop ALS, increase LNAV/VNAV all Cats visibility to ¾ SM and LNAV Cat C and D visibility to 1½ SM.


MALSRL

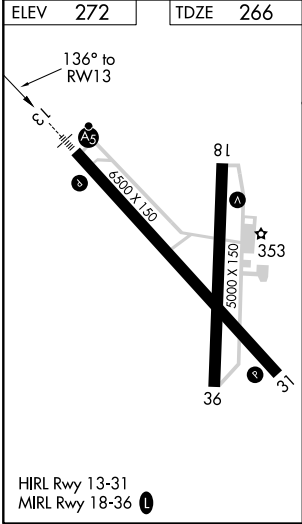
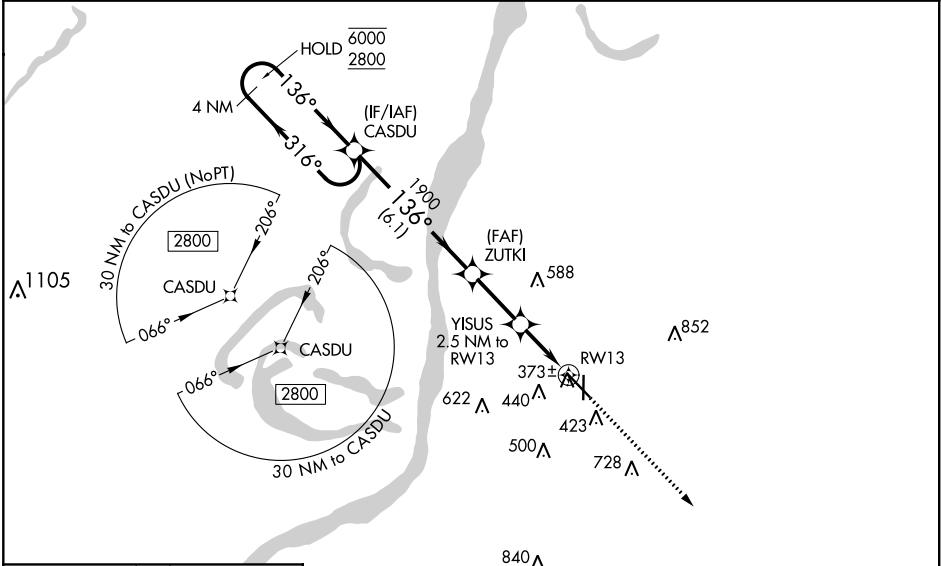
AS

MISSED APPROACH: Climb to 2800 direct WEGRA and hold.

AWOS-3PT  
124.675

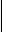


HOUSTON CENTER  
120.975 299.6

UNICOM  
122.8 (CTAF) 



HIRL Rwy 13-31  
MIRL Rwy 18-36 

NATCHEZ, MISSISSIPPI  
Amdt 1B 21MAY20

4 NM Holding Pattern		CASDU	ZUTKI	YISUS	WEGRA
6000 ← 316°		2800 → 136°	1900	2.5 NM to RWY 13	2800
GP 3.00° TCH 54			1900	*1.1 NM to RWY 13	
			*1100		
		6.1 NM	2.5 NM	1.4 NM	1.1 NM
CATEGORY		A	B	C	D
LPV DA		466-½		200 (200-½)	
LNAV/VNAV DA		534-½		268 (300-½)	
LNAV MDA		680-½ 414 (500-½)		680-¾ 414 (500-¾)	
 CIRCLING		740-1 468 (500-1)	800-1 528 (600-1)	1020-2¼ 748 (800-2¼)	1220-3 948 (1000-3)

SC-4, 03 DEC 2020 to 31 DEC 2020

SC-4, 03 DEC 2020 to 31 DEC 2020