


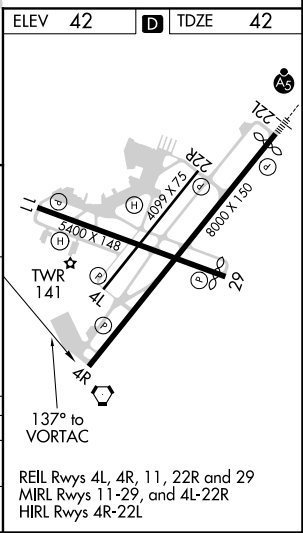
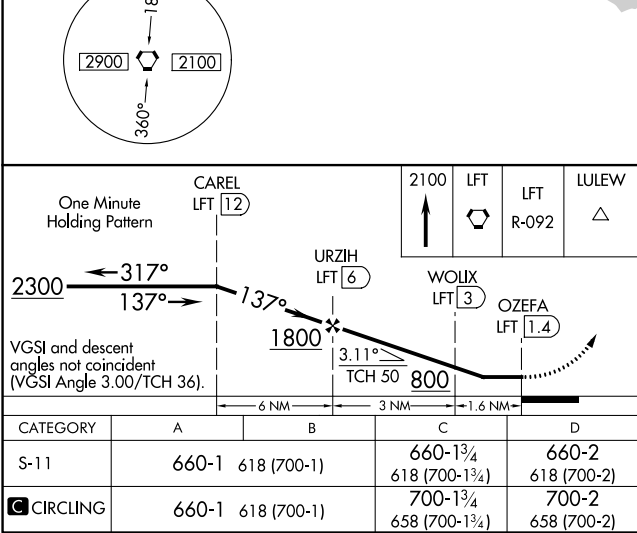
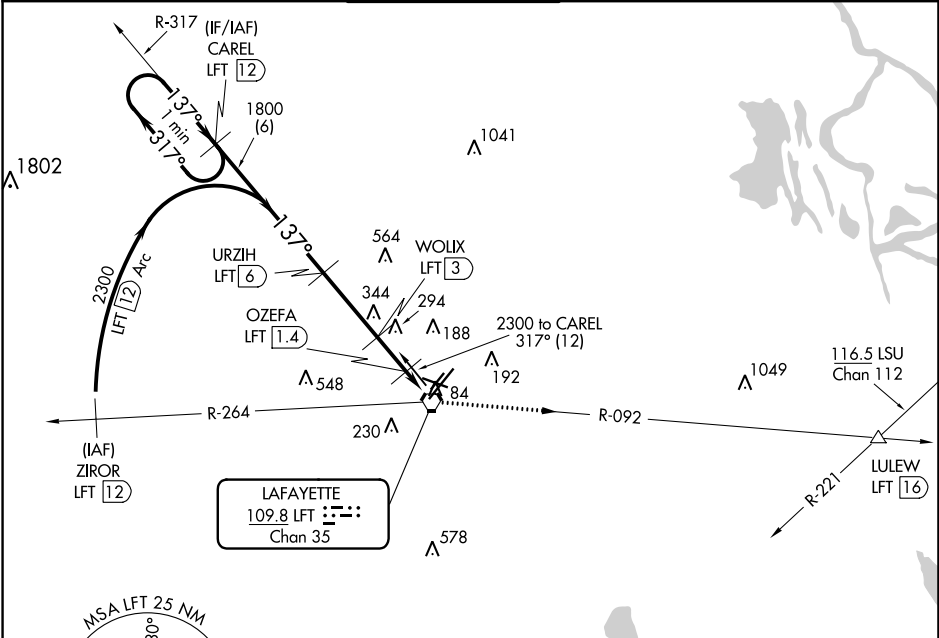
VORTAC LFT	APP CRS	Rwy Idg	5400
109.8	137°	TDZE	42
Chan 35		Apt Elev	42

VOR/DME RWY 11

LAFAYETTE RGNL/PAUL FOURNET FIELD (LFT)

 Procedure NA at night. Helicopter visibility reduction below 1 SM NA. When local altimeter setting not received, use Acadiana Rgnl altimeter setting and increase all MDAs 40 feet, increase Circling visibility Cat C/D ¼ SM.	MISSED APPROACH: Climb to 2100 to LFT VORTAC and on LFT VORTAC R-092 to LULEW/LFT 16 DME.
--	---

ATIS	LAFAYETTE APP CON *	LAFAYETTE TOWER *	GND CON	CLNC DEL	UNICOM
134.05	121.1 363.0	118.5 (CTAF) 0 257.8	121.8	125.55	122.95



SC-4, 03 DEC 2020 to 31 DEC 2020

SC-4, 03 DEC 2020 to 31 DEC 2020