

| | | | |
|---------------|-------------|----------|------|
| LOC/DME I-TYN | APP CRS | Rwy Idg | 8000 |
| 110.9 | | TDZE | 40 |
| Chan 46 | 036° | Apt Elev | 42 |

ILS or LOC RWY 4R

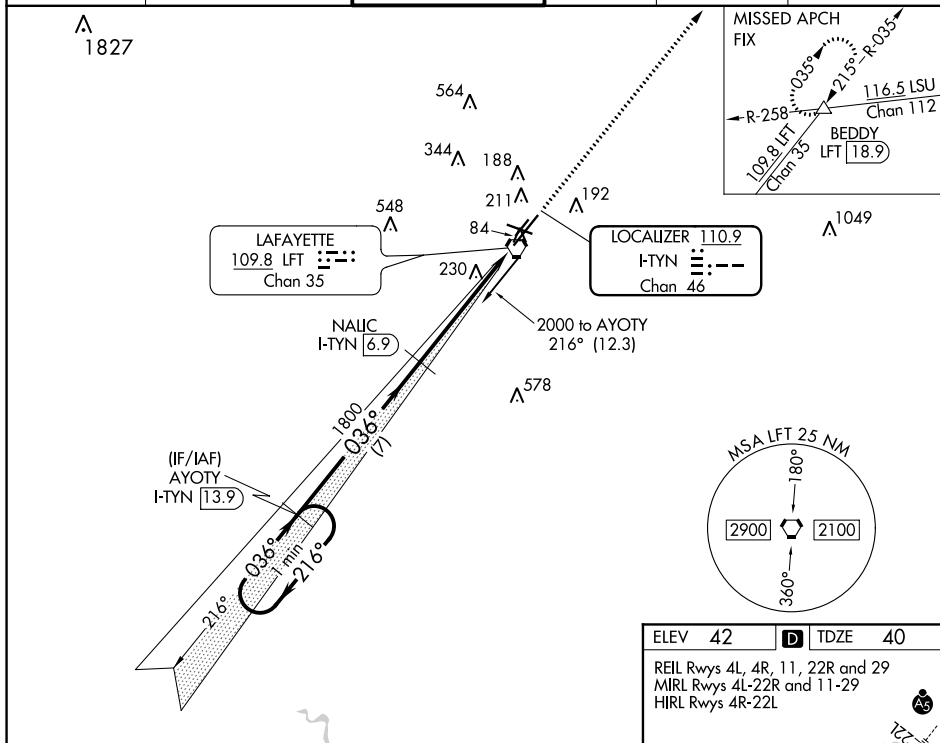
LAFAYETTE RGNL/PAUL FOURNET FIELD (LFT)

DME required for procedure entry and for LOC only.

ASR Rwy 4R helicopter visibility reduction below $\frac{3}{4}$ SM NA. VDP NA when using Acadiana Rgnl altimeter setting. When local altimeter setting not received, use Acadiana Rgnl altimeter setting and increase all MDA 29 feet and all MDA 40 feet; increase S-LS 4R and S-LOC 4R visibility all Cats $\frac{1}{8}$ SM, Circling visibility Cat C/D $\frac{1}{4}$ SM.

MISSED APPROACH: Climb to 2000 on LFT R-035 to BEDDY INT/LFT 18.9 DME and hold.

| | | | | | |
|----------------|------------------------------------|---|------------------|--------------------|------------------|
| ATIS 134.05 | LAFAYETTE APP CON ★ 121.1 363.0 | LAFAYETTE TOWER ★ 118.5 (CTAF) 0 257.8 | GND CON 121.8 | CLNC DEL 125.55 | UNICOM 122.95 |
|----------------|------------------------------------|---|------------------|--------------------|------------------|




SC-4, 03 DEC 2020 to 31 DEC 2020

SC-4, 03 DEC 2020 to 31 DEC 2020

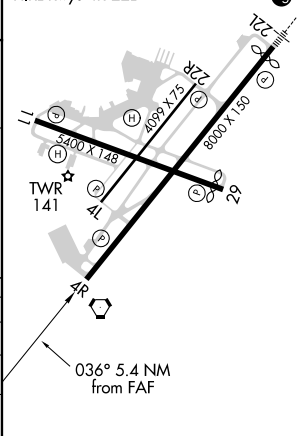
One Minute Holding Pattern

[illegible]

| CATEGORY | A | B | C | D |
|--|--------------------------------|--|---|----------------------|
| S-ILS 4R | 316-7 ₈ 276 (300-%) | | | |
| S-LOC 4R | 500-1 460 (500-1) | 500-1 ³ ₈ 460 (500-1 ³ ₈) | | |
|  CIRCLING | 540-1 498 (500-1) | 580-1 538 (600-1) | 700-1 ³ ₄ 658 (700-1 ³ ₄) | 700-2 658 (700-2) |

| | | | | |
|------|----|----------|------|----|
| ELEV | 42 | D | TDZE | 40 |
|------|----|----------|------|----|

REIL Rwy 4L, 4R, 11, 22R and 29
MIRL Rwy 4L-22R and 11-29
HIRL Rwy 4R-22L



LAFAYETTE, LOUISIANA

Amdt 2F 23APR20

LAFAYETTE RGNL/PAUL FOURNET FIELD (LFT)

30°12'N-91°59'W

ILS or LOC RWY 4R