


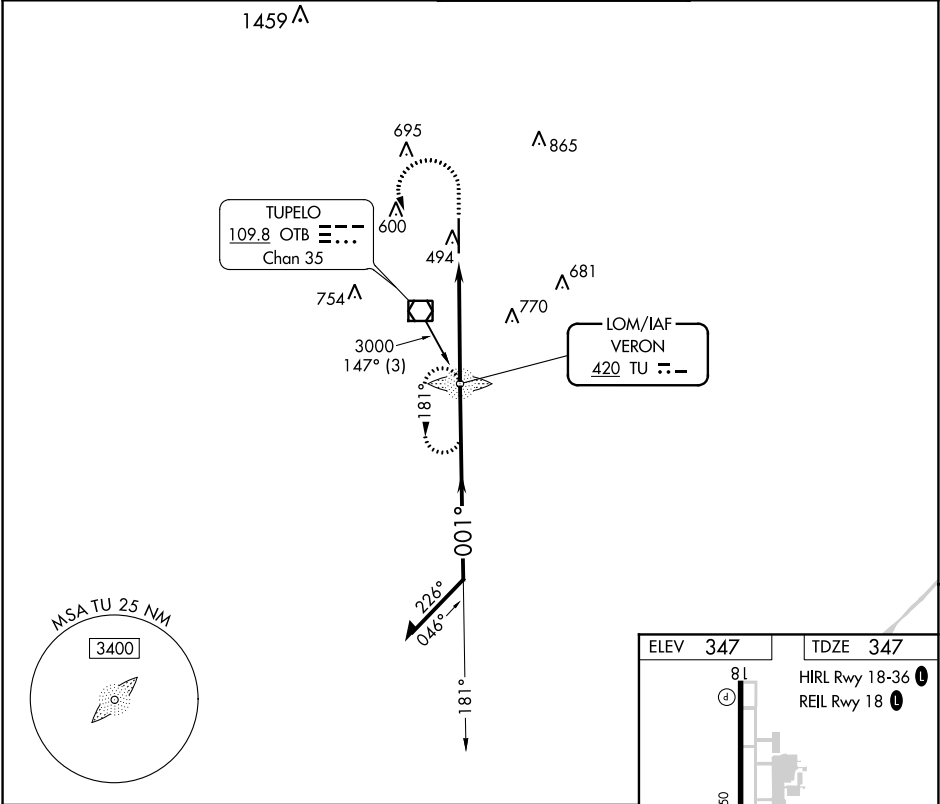
LOM TU <b>420</b>	APP CRS <b>001°</b>	Rwy Idg <b>7150</b> TDZE <b>347</b> Apt Elev <b>347</b>	<b>NDB RWY 36</b> TUPELO RGNL (TUP)
----------------------	------------------------	---	--

**▼** When local altimeter setting not received, use Columbus AFB altimeter setting and increase all MDA 120 feet, increase S-36 Cats C and D visibility ¾ SM and Circling Cats C and D ½ SM. For inop ALS, increase S-36 Cat A and B visibility to 1 SM and Cat C and D to 1 ¾ SM. For inop ALS when using Columbus AFB altimeter setting, increase S-36 Cat A and B visibility to 1 SM and Cat C and D to 1 ¾ SM.

**MAISR**  


**MISSED APPROACH:**  
Climb to 1500 then climbing left turn to 3000 direct TU LOM and hold.

ASOS <b>133.525</b>	MEMPHIS CENTER <b>128.5 279.55</b>	TUPELO TOWER ★ <b>118.775 (CTAF) 254.275</b>	GND CON <b>121.825 254.275</b>
------------------------	---------------------------------------	---	-----------------------------------



1500

3000

TU

TU LOM

181°

2000

001°

2000

3.19°

TCH 55

4.7 NM

ELEV 347

TDZE 347

HIRL Rwy 18-36

REIL Rwy 18

7150 X 150

TWR 423

36

001° 4.7 NM from FAF

FAF to MAP 4.7 NM

CATEGORY	A	B	C	D
S- 36	840-¾ 493 (500-¾)		840-1 493 (500-1)	
CIRCLING	840-1 493 (500-1)		900-1½ 553 (600-1½)	1140-2½ 793 (800-2½)

Knots	60	90	120	150	180
Min:Sec	4:42	3:08	2:21	1:53	1:34

SC-4, 03 DEC 2020 to 31 DEC 2020

SC-4, 03 DEC 2020 to 31 DEC 2020