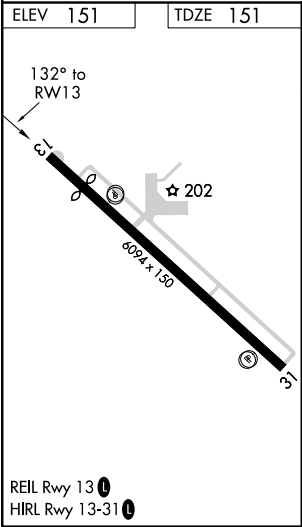
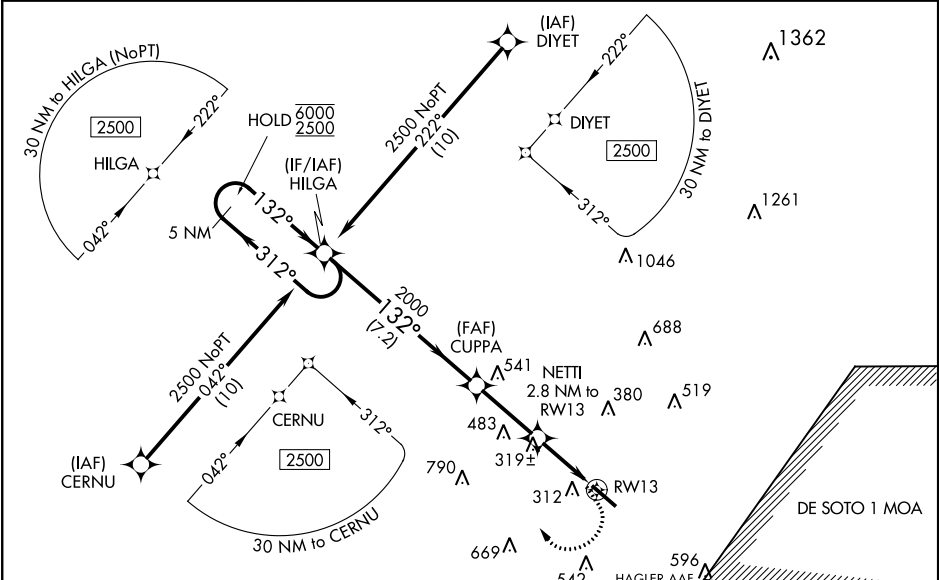


WAAS CH 86403 W13A	APP CRS 132°	Rwy Idg TDZE 151 Apt Elev 151	5098
--	------------------------	---	-------------

RNAV (GPS) Z RWY 13
HATTIESBURG BOBBY L CHAIN MUNI (HBG)

RNP APCH.	MISSED APPROACH: Climb to 600 then climbing right turn to 2500 direct HILGA and hold.
-----------	--

ASOS 135.425	HOUSTON CENTER 126.8 327.8	UNICOM 122.8 (CTAF) 0
------------------------	--------------------------------------	---------------------------------



Uncontrolled helicopter and military airlift aircraft in vicinity of Hagler AAF and Shelby Auxiliary 1 Airfield.			
--	--	--	--

SC-4, 03 DEC 2020 to 31 DEC 2020

SC-4, 03 DEC 2020 to 31 DEC 2020