

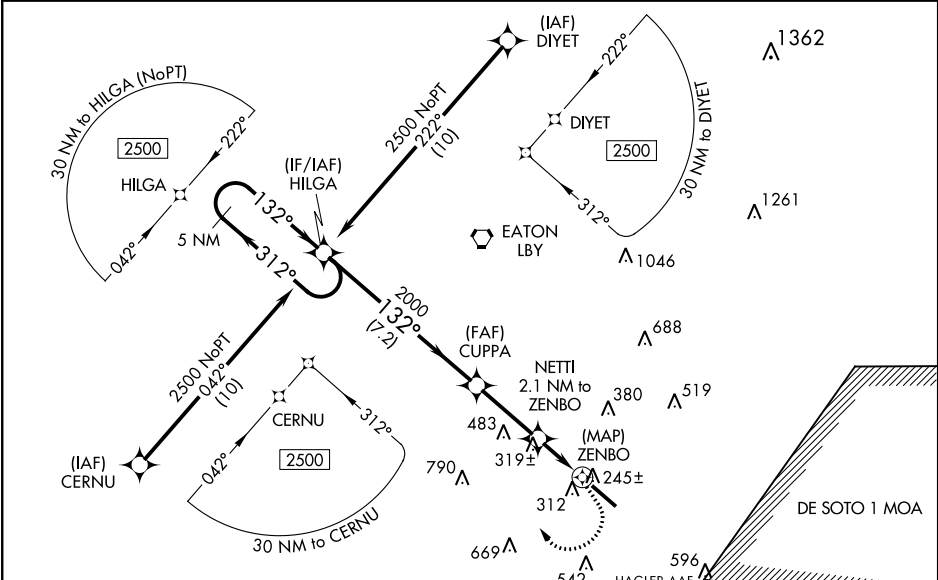
WAAS CH 86720 W13B	APP CRS 132°	Rwy Idg TDZE 151 Apt Elev 151	5098
--	------------------------	---	-------------

RNAV (GPS) Y RWY 13
HATTIESBURG BOBBY L CHAIN MUNI (HBG)

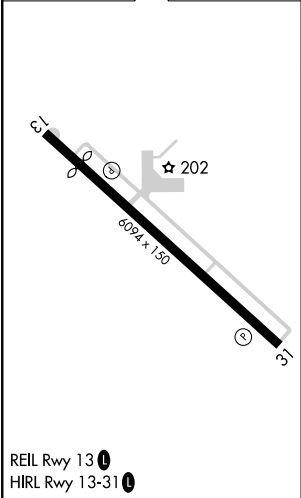
For uncompensated Baro-VNAV systems, LNAV/VNAV NA below -15°C (5°F) or above 43°C (109°F). DME/DME RNP-0.3 NA. When local altimeter setting not received, use Hattiesburg-Laurel Rgnl altimeter setting and increase all DA 51 feet and all MDA 60 feet. Increase LPV all Cats and LNAV Cat C/D visibility ½ mile and LNAV/VNAV all Cats and Circling Cat C visibility ¼ mile. Baro-VNAV and VDP NA when using Hattiesburg-Laurel Rgnl altimeter setting.

MISSED APPROACH: Climbing right turn to 2500 direct HILGA and hold.

ASOS 135.425	HOUSTON CENTER 126.8 327.8	UNICOM 122.8 (CTAF) 0
------------------------	--------------------------------------	---------------------------------



ELEV 151	TDZE 151
-----------------	-----------------



Uncontrolled helicopter and military airlift aircraft in vicinity of Hagler AAF and Shelby Auxiliary 1 Airfield.		VGSI and RNAV glidepath not coincident (VGSI Angle 3.00/TCH 50).		2500	HILGA
5 NM Holding Pattern		HILGA		*NAV only.	
GP 3.00° TCH 40		2500 ← 312°		2000	
		132° →		*1080	
		132°		2.1 NM to ZENBO	
		2000		*1.2 NM to RWY 13	
		7.2 NM		ZENBO	
		2.9 NM		1.6 NM	
		0.5		0.7	
CATEGORY	A	B	C	D	
LPV DA	442-1		291 (300-1)		
LNAV/VNAV DA	523-1¼		372 (400-1¼)		
LNAV MDA	580-1	429 (500-1)	580-1¼	429 (500-1¼)	
CIRCLING	620-1	700-1	700-1½	720-2	
	469 (500-1)	549 (600-1)	549 (600-1½)	569 (600-2)	