

VOR/DME or TACAN RWY 22

VORTAC HRV
114.1
Chan 88

APCH CRS
236°

Rwy Idg	10,001
TDZE	-1
Arpt Elev	2

AL-630 [USN]

NEW ORLEANS NAS JRB
(ALVIN CALLENDER FLD) (KNBG)

T * When ALS inop, increase vis CAT AB to 1 mile, CAT CD to $1\frac{3}{8}$ miles.

ALSF-1

MISSED APPROACH: Climb to 2000 via R-226 to TINEE and hold.

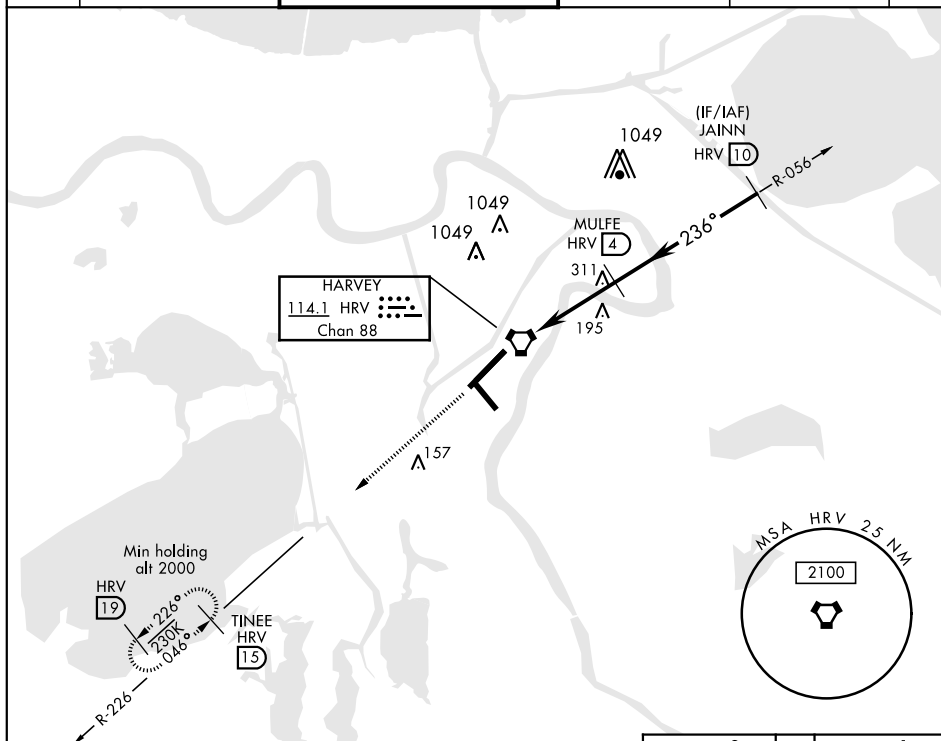
ATIS ★
279.55

NEW ORLEANS APP CON
123.85 256.9

NAVY NEW ORLEANS TOWER ★
Q 123.8 340.2 (CTAF)

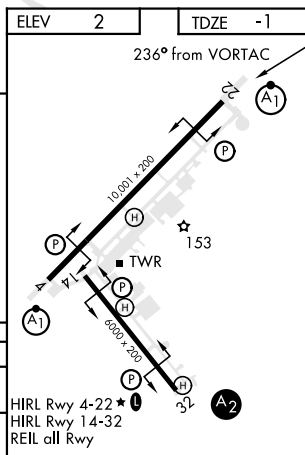
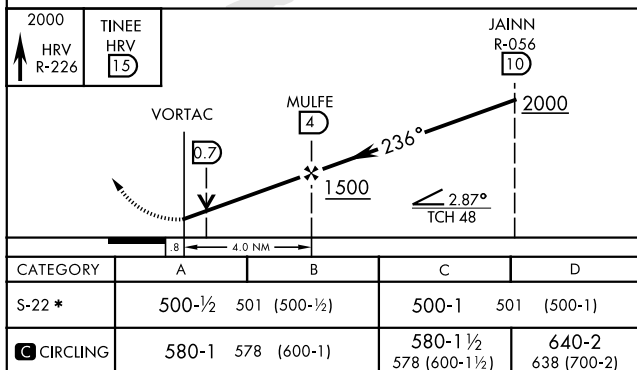
GND CON
121.6 270.35

CLNC DEL
128,35 263,0

ASR/
PAR

RADAR REQUIRED

EMERG SAFE ALT 100 NM 3100



NEW ORLEANS, LOUISIANA

29°50'N-90°02'W

NEW ORLEANS NAS JRB (KNBG)
(ALVIN CALLENDER FLD)

Amdt 2 13SEP18

VOR/DME or TACAN RWY 22