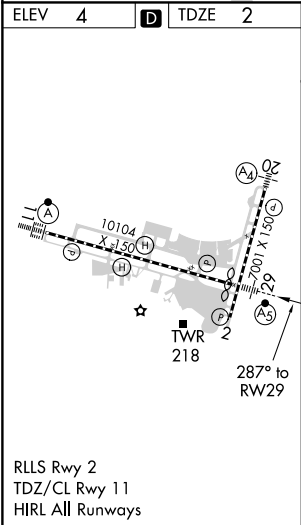
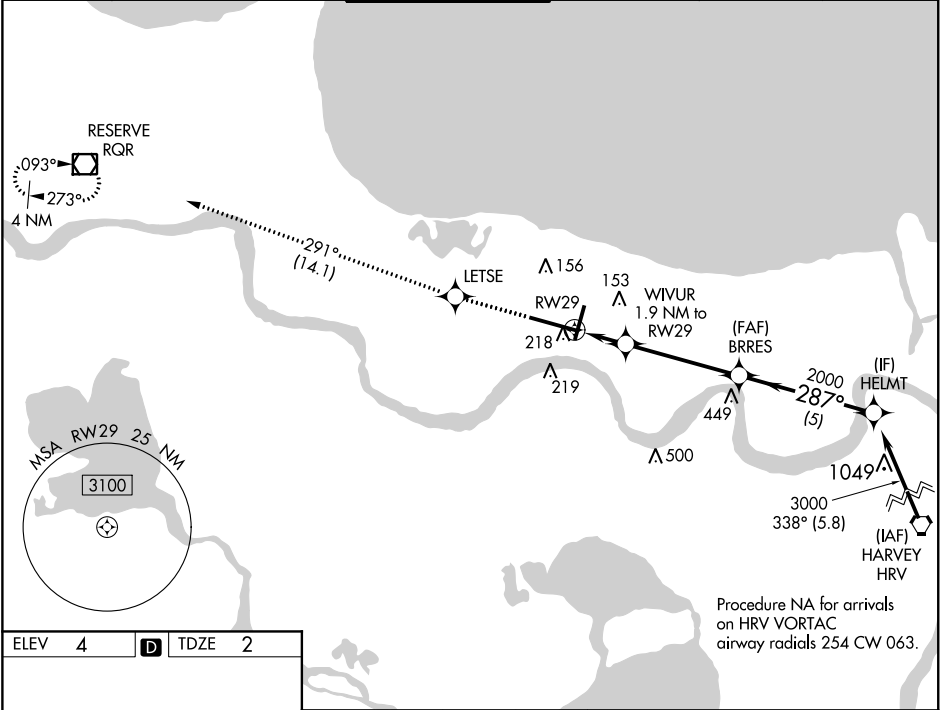


WAAS CH 49006 W29A	APP CRS 287°	Rwy Idg TDZE Apt Elev	9800 2 4
--	------------------------	-----------------------------	-------------------------------------

RNAV (GPS) Y RWY 29
LOUIS ARMSTRONG NEW ORLEANS INTL (MSY)

▼ For uncompensated Baro-VNAV systems, LNAV/VNAV NA below -1°C (31°F) or above 54°C (130°F). DME/DME RNP-0.3 NA. For inop MALSR, increase Cat C/D visibility to 1½ mile. ** RVR 1800 authorized with use of FD or AP or HUD to DA.	MALSR 	MISSED APPROACH: Climb to 3000 direct LETSE and on track 291° to RQR VOR/DME and hold.
---	-----------	--

D-ATIS 127.55	NEW ORLEANS APP CON WEST 125.5 350.35 EAST 133.15 290.3	NEW ORLEANS TOWER 119.5 254.3	GND CON 121.9 273.525	CLNC DEL 126.575	CPDLC
-------------------------	---	---	---------------------------------	----------------------------	-------



3000	LETSE	tr 291°	RQR	VGSI and RNAV glidepath not coincident (VGSI Angle 3.00/TCH 68).
*LNAV only.				
CATEGORY	A	B	C	D
LPV DA **	202/24		200 (200-½)	
LNAV/VNAV DA	380/40		378 (400-¾)	
LNAV MDA	480/24 478 (500-½)		480/50 478 (500-1)	
C CIRCLING	520-1 516 (600-1)		580-1½ 576 (600-1½) 600-2 596 (600-2)	

SC-4, 03 DEC 2020 to 31 DEC 2020

SC-4, 03 DEC 2020 to 31 DEC 2020