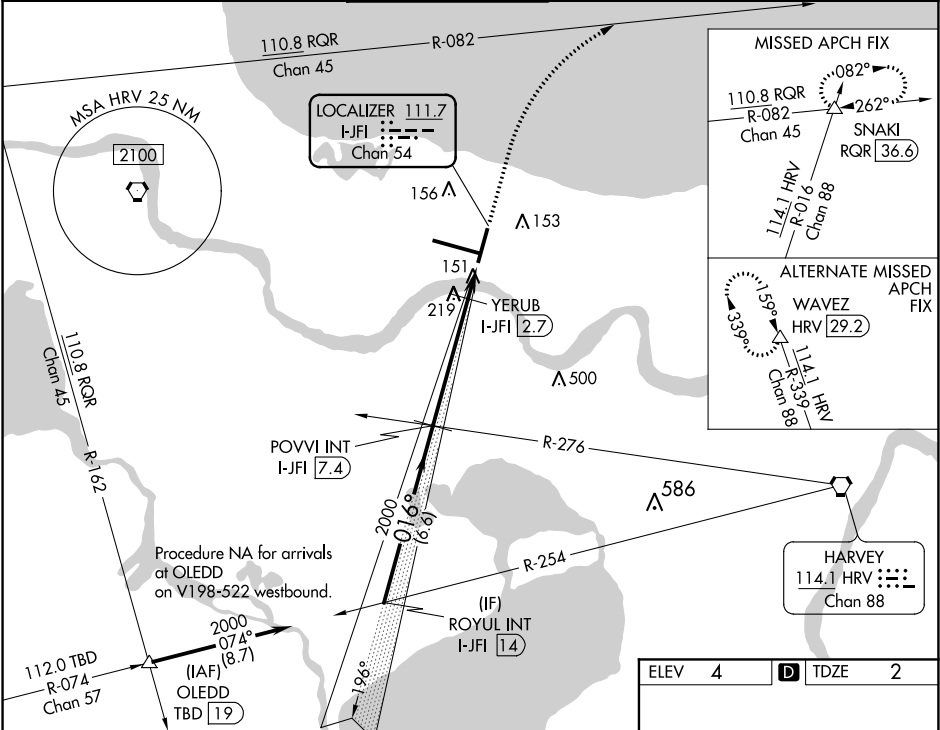


LOC/DME I-JFI 111.7 Chan 54	APP CRS 016°	Rwy Idg 7001 TDZE 2 Apt Elev 4
---	------------------------	---

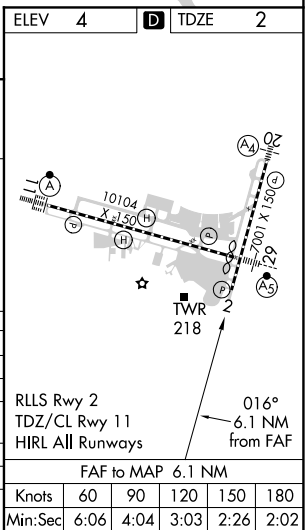
ILS or LOC RWY 2
LOUIS ARMSTRONG NEW ORLEANS INTL (MSY)

Autopilot coupled approach NA below 808. Rwy 2 helicopter visibility reduction below RVR 4000 NA.	MISSED APPROACH: Climb to 1500 then climbing right turn to 3000 on RQR VOR/DME R-082 to SNAKI INT/RQR 36.6 DME and hold.
---	--

D-ATIS 127.55	NEW ORLEANS APP CON WEST 125.5 350.35 EAST 133.15 290.3	NEW ORLEANS TOWER 119.5 254.3	GND CON 121.9 273.525	CLNC DEL 126.575	CPDLC
-------------------------	---	---	---------------------------------	----------------------------	-------



ROYUL INT I-JFI 14		POVVI INT I-JFI 7.4		1500 ↑		3000 RQR R-082		SNAKI △	
2000		2000		YERUB I-JFI 2.7		I-JFI 1.3		*LOC only.	
016°		016°		*480					
GS 3.00° TCH 52									
6.6 NM		4.7 NM		C		1.4 NM			
CATEGORY	A		B		C		D		
S-ILS 2	411/60		409 (500-1¼)						
S-LOC 2	480/55	478 (500-1)		480-1⅞		478 (500-1⅞)			
CIRCLING	520-1	516 (600-1)		580-1½ 576 (600-1½)		580-2 576 (600-2)			
YERUB FIX MINIMUMS									
S-LOC 2	420/55	418 (500-1)		420/60		418 (500-1¼)			
CIRCLING	520-1	516 (600-1)		580-1½ 576 (600-1½)		580-2 576 (600-2)			



SC-4, 03 DEC 2020 to 31 DEC 2020

SC-4, 03 DEC 2020 to 31 DEC 2020