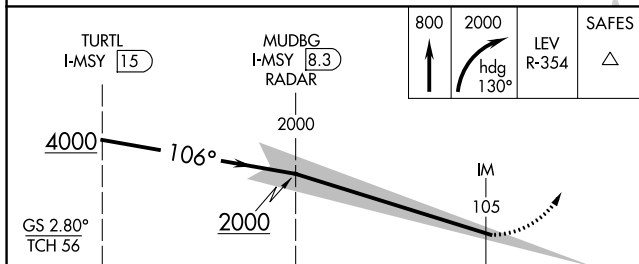
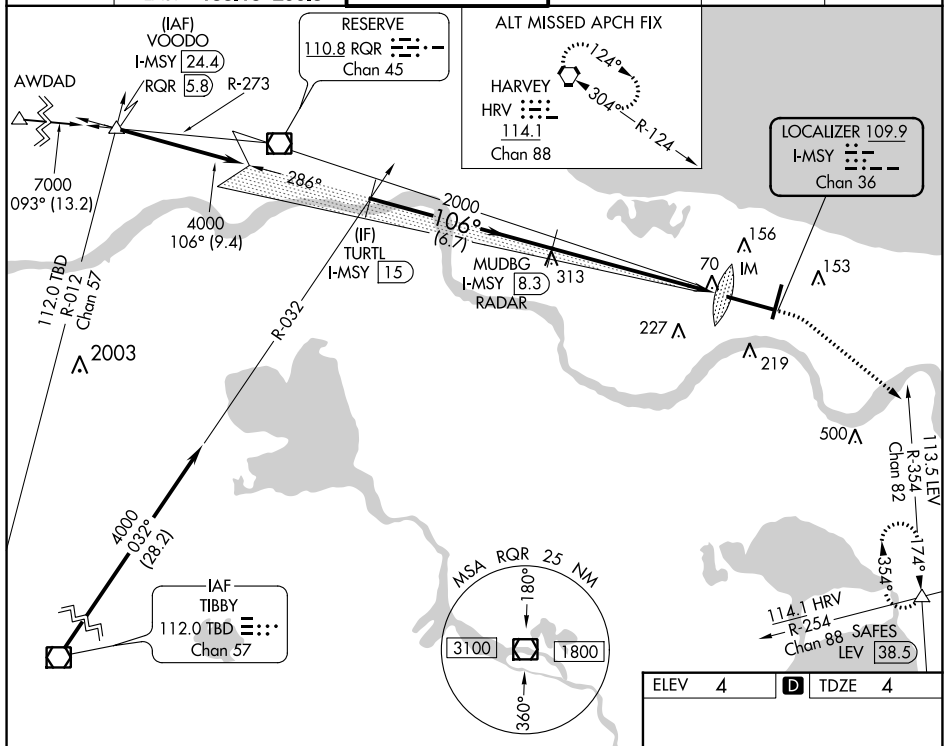


ILS RWY 11 (CAT II & III)
LOUIS ARMSTRONG NEW ORLEANS INTL (MSY)

ALSF-2

MISSED APPROACH: Climb to 800 then climbing right turn to 2000 on heading 130° and on LEV VORTAC R-354 to SAFES INT/LEV 38.5 DME and hold.

D-ATIS 127.55	NEW ORLEANS APP CON WEST 125.5 350.35 EAST 133.15 290.3	NEW ORLEANS TOWER 119.5 254.3	GND CON 121.9 273.525	CLNC DEL 126.575	CPDLC
-------------------------	---	---	---------------------------------	----------------------------	-------



	6.7 NM		6.5 NM		1248'
CATEGORY	A	B	C	D	
S-ILS 11	CAT II RA 100/12 100 DA 104				
S-ILS 11	CAT III RVR 06				

CATEGORY II & III ILS - SPECIAL AIRCREW
& AIRCRAFT CERTIFICATION REQUIRED

