

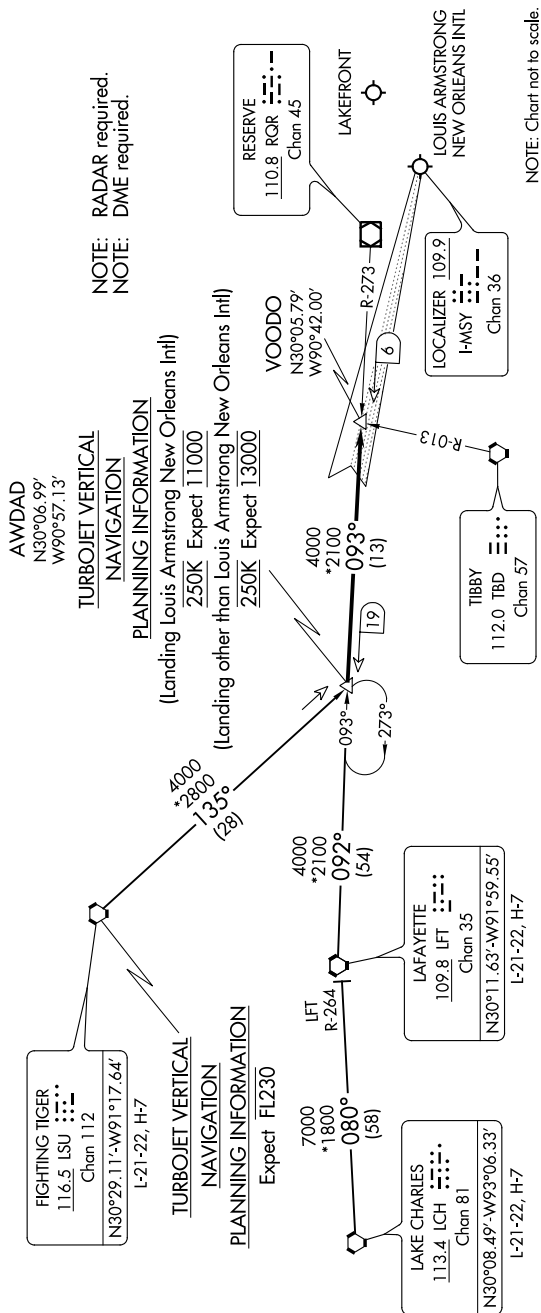
SC-4, 03 DEC 2020 to 31 DEC 2020

NEW ORLEANS APP CON
125.5 350.35 (WEST)
133.15 290.3 (EAST)
MSY D-ATIS
127.55
NEW ATIS
124.9

ARRIVAL ROUTE DESCRIPTION

FIGHTING; TIGER TRANSITION [LSU.AWDAD1]; From over LSU VORTAC on LSU R-135 to AWDAD INT.
LAFAYETTE TRANSITION [LFT.AWDAD1]; From over LFT VOTRAC on LFT R-092 and RQR R-273 to AWDAD INT.
LAKE CHARLES TRANSITION [LCH.AWDAD1]; From over LCH VORTAC on LCH R-080 and LFT R-264 to LFT VORTAC then on LFT R-092 and RQR R-273 to AWDAD INT.

From over AWDAD INT on RQR VOR/DME R-273 to VOODOO INT.
LANDING KMSY RWY 11: Intercept HMSY localizer and expect
clearance for ILS RWY 11 approach.
LANDING OTHER: Expect vectors to final approach course.



NOTE: Chart not to scale.

AWDAD ONE ARRIVAL
(AWDAD.AWDAD1) 07DEC17

NEW ORLEANS, LOUISIANA