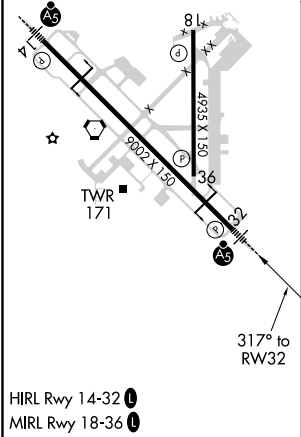
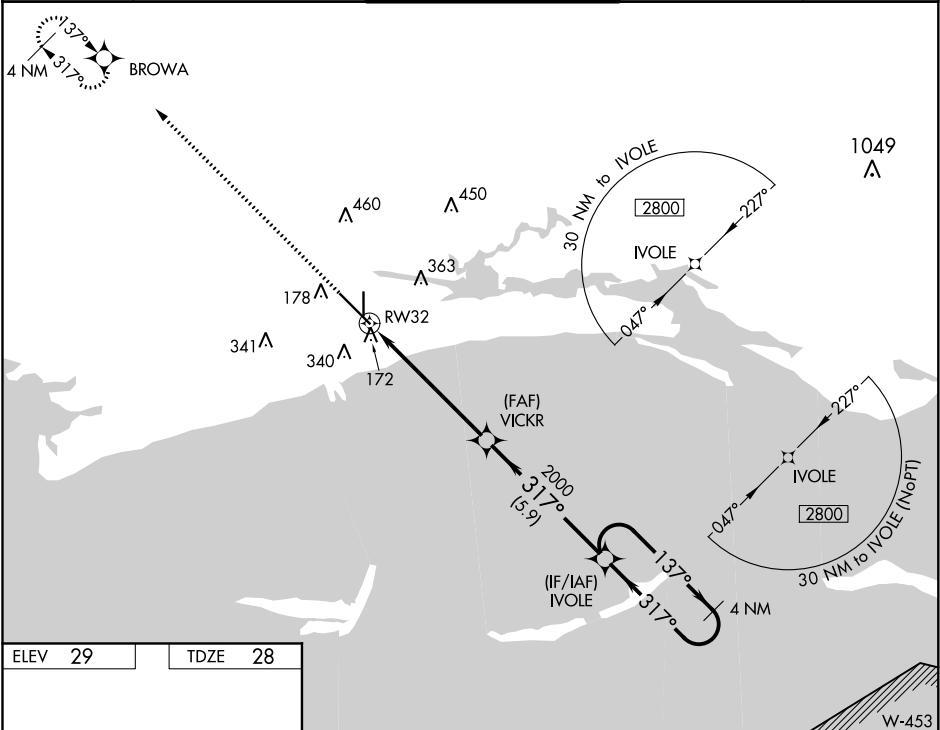


WAAS CH 56207 W32A	APP CRS 317°	Rwy Idg 9002 TDZE 28 Apt Elev 29
--	------------------------	---

RNAV (GPS) RWY 32
GULFPORT-BILOXI INTL (GPT)

 ASR	For uncompensated Baro-VNAV systems, LNAV/VNAV NA below -3°C (27°F) or above 54°C (130°F). DME/DME RNP-0.3 NA. For inop ALS, increase LNAV/VNAV all Cats visibility to 1½ SM and LNAV Cat C/D to RVR 6000. # RVR 1800 authorized with use of FD or AP or HUD to DA.	 MALSR	MISSED APPROACH: Climb to 2000 direct BROWA and hold.
---------	---	-----------	--

ATIS 119.45	GULFPORT APP CON ★ 127.5 254.25	GULFPORT TOWER ★ 123.7 (CTAF) 0 339.8	GND CON 120.4 348.6	UNICOM 122.95
-----------------------	---	---	-------------------------------	-------------------------



2000	BROWA	VGSI and RNAV glidepath not coincident (VGSI Angle 3.00/TCH 72).		4 NM Holding Pattern
* LNAV only.		* 1.1 NM to RW32		IVOLE
RW32		VICKR 2000		137° → 2800
1.1 NM		4.9 NM		← 317°
2000		2000		GP 3.00° TCH 55
CATEGORY	A	B	C	D
LPV DA #	228/24 200 (200-½)			
LNAV/VNAV DA	446/50 418 (500-1)			
LNAV MDA	440/24 412 (500-½)			
CIRCLING	500-1 471 (500-1)	640-1 611 (700-1)	820-2¼ 791 (800-2¼)	820-2½ 791 (800-2½)