

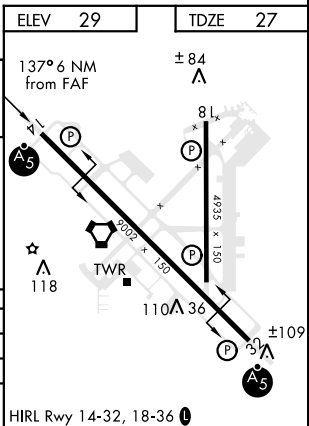
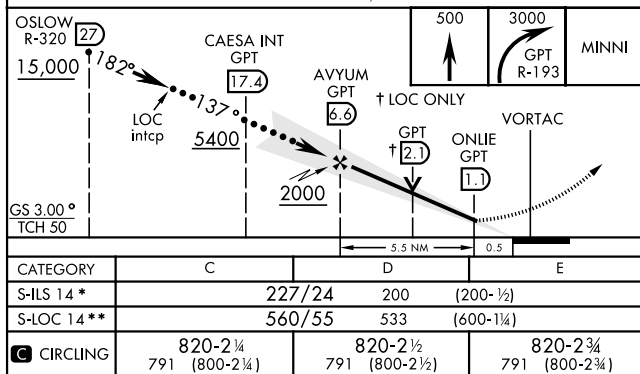
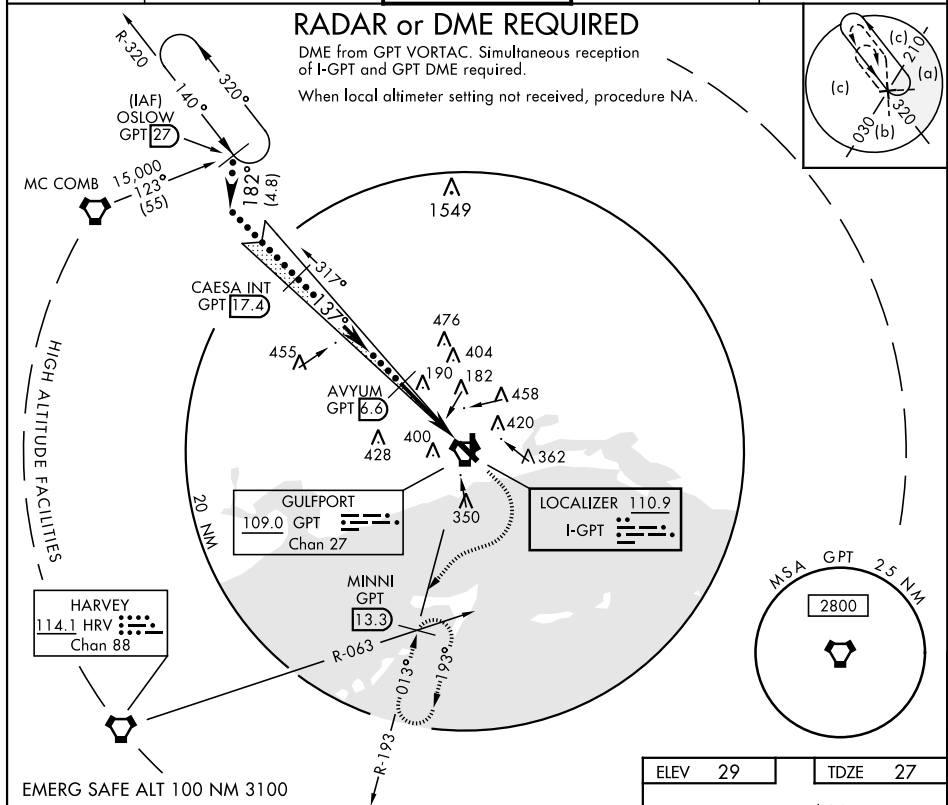
HI-ILS Y or LOC Y RWY 14

LOC I-GPT 110.9		APCH CRS 137°		Rwy Idg 9002 TDZE 27 Arpt Elev 29		JAL-576 [USAF]		GULFPORT-BILOXI INTL (KGPT)			
<div><div></div><div></div></div> <div><div></div><div></div></div> <div>* When ALS inop, increase vis to RVR 40, RVR 18 Authorized with use of FD or AP or HUD to DA. ** When ALS inop, increase vis to 1½ miles.</div>				<div><div></div><div></div></div> <div><div></div><div></div></div> <div>MALS A5</div>		MISSED APPROACH: Climb to 500, then climbing right turn to 3000 on GPT VORTAC R-193 to MINNI INT/GPT 13.3 DME and hold.					
ATIS ★ 119.45		GULFPORT APP CON 124.6 354.1 127.5 254.25		130°-309° 310°-129°		GULFPORT TOWER ★ 123.7 CTAF 0 339.8		GND CON 120.4 348.6		ASR	

RADAR or DME REQUIRED

DME from GPT VORTAC. Simultaneous reception of I-GPT and GPT DME required.

When local altimeter setting not received, procedure NA.



HI-ILS Y or LOC Y RWY 14