


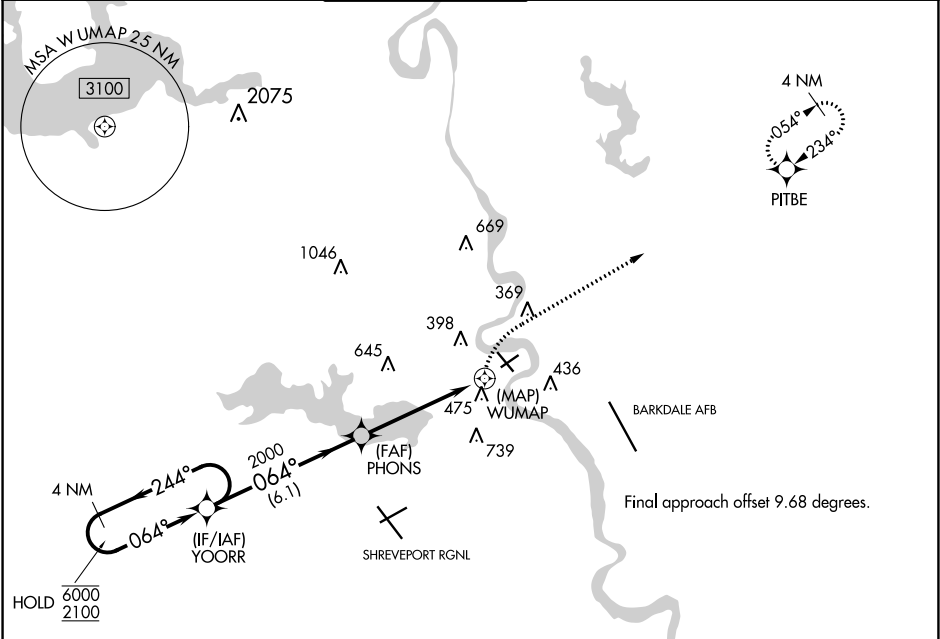
APP CRS	Rwy Idg	4200
064°	TDZE	178
	Apt Elev	179

RNAV (GPS) RWY 5
SHREVEPORT DOWNTOWN (DTN)

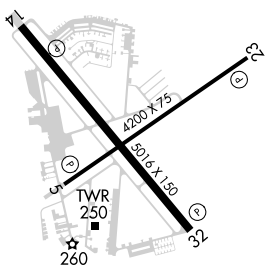
RNP APCH.	
	Circling Rwy 23, 32 NA at night. Rwy 5 helicopter visibility reduction below 1 SM NA. Straight-in minimums NA at night.

MISSED APPROACH: Climbing left turn to 2000 direct PITBE and hold.

ASOS	SHREVEPORT APP CON	DOWNTOWN TOWER *	GND CON	CLNC DEL	CLNC DEL	UNICOM
118.525	119.9 335.55 (153°-319°) 123.75 360.725 (320°-152°)	120.225 (CTAF) 284.6	121.65	121.65	119.9 (When twr closed)	122.95



4 NM Holding Pattern				
YOORR				
6000 ← 244°				
2100 → 064°				
PHONS				
2000				
3.00° TCH 42				
WUMAP				
RW05				
6.1 NM 4.9 NM 0.7				
CATEGORY	A	B	C	D
LNAV MDA	720-1	542 (600-1)	NA	
CIRCLING	800-1 621 (700-1)	880-1 701 (800-1)	NA	

ELEV 179	TDZE 178
	
MIRL Rwy 5-23 HIRL Rwy 14-32 REIL Rws 5, 14, 23, and 32	

SC-4, 03 DEC 2020 to 31 DEC 2020

SC-4, 03 DEC 2020 to 31 DEC 2020