

LOC RWY 14
SHREVEPORT DOWNTOWN (DTN)

MISSED APPROACH: Climb to 2000 direct EMG VORTAC and hold.

IAF
BELCHER
117.4 EIC 3-2-2
Chan 121

Procedure NA for arrival on
EIC VORTAC airway radials
169 CW 199.

ALTERNATE MISSED
APCH FIX

BELCHER
117.4 EIC 3-2-2
Chan 121

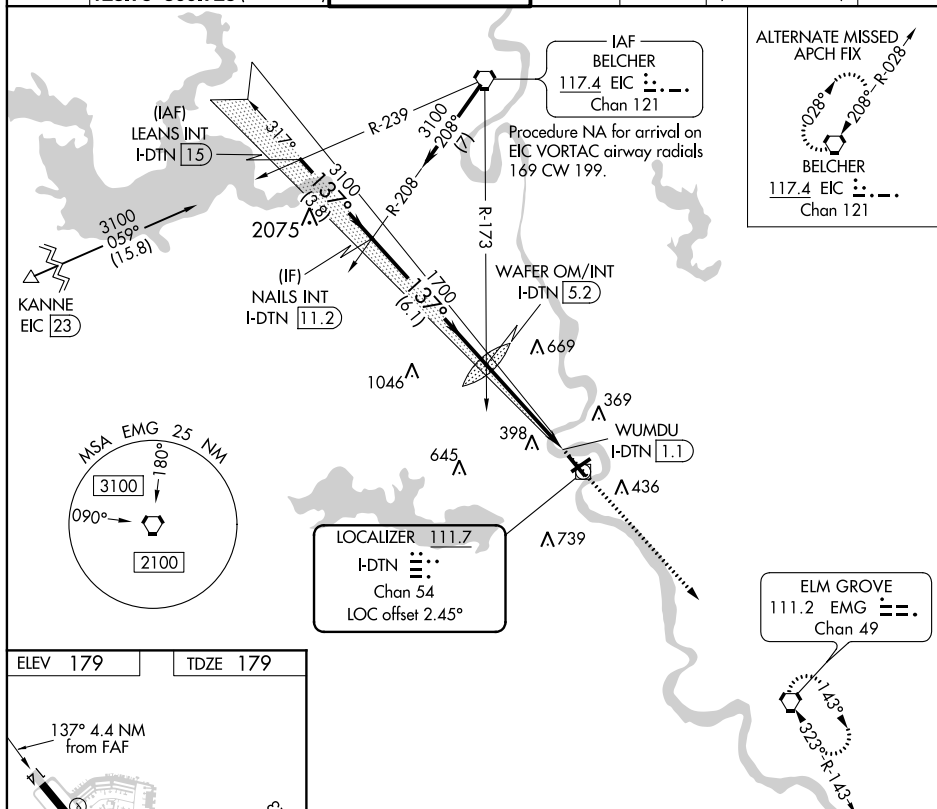


Diagram illustrating a flight path profile with altitudes, distances, and angles. The profile shows a descent from 3100 to 1700, followed by a level segment at 1700. Key points include LEANS INT I-DTN 15, NAILS INT I-DTN 11.2, WAVER OM/INT I-DTN 5.2, and WUMDU I-DTN 1.1. Distances between points are 3.8 NM, 6.1 NM, 3 NM, 1.1 NM, and 0.3 NM. Angles shown are 137°, 137°, 3.12°, and TCH 55. A note states 'VGSI and descent angles not coincident (VGSI Angle 3.00/TCH 43)'. A scale bar at the bottom shows 0, 100, 200, 300, 400, 500, 600, 700, 800, 900, 1000, 1100, 1200, 1300, 1400, 1500, 1600, 1700, 1800, 1900, 2000, 2100, 2200, 2300, 2400, 2500, 2600, 2700, 2800, 2900, 3000, 3100, 3200, 3300, 3400, 3500, 3600, 3700, 3800, 3900, 4000, 4100, 4200, 4300, 4400, 4500, 4600, 4700, 4800, 4900, 5000, 5100, 5200, 5300, 5400, 5500, 5600, 5700, 5800, 5900, 6000, 6100, 6200, 6300, 6400, 6500, 6600, 6700, 6800, 6900, 7000, 7100, 7200, 7300, 7400, 7500, 7600, 7700, 7800, 7900, 8000, 8100, 8200, 8300, 8400, 8500, 8600, 8700, 8800, 8900, 9000, 9100, 9200, 9300, 9400, 9500, 9600, 9700, 9800, 9900, 10000.

CATEGORY	A	B	C	D
S-LOC 14	680-1	501 (600-1)	680-1 $\frac{3}{8}$	501 (600-1 $\frac{3}{8}$)
C CIRCLING	800-1 621 (700-1)	880-1 701 (800-1)	1100-2 $\frac{3}{4}$ 921 (1000-2 $\frac{3}{4}$)	1100-3 921 (1000-3)